

Product datasheet for **TA331737**

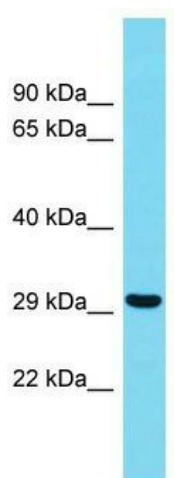
TEFM Rabbit Polyclonal Antibody

Product data:

| | |
|-------------------------|---|
| Product Type: | Primary Antibodies |
| Applications: | WB |
| Recommended Dilution: | WB |
| Reactivity: | Human |
| Host: | Rabbit |
| Isotype: | IgG |
| Clonality: | Polyclonal |
| Immunogen: | The immunogen for Anti-TEFM Antibody is: synthetic peptide directed towards the N-terminal region of Human TEFM. Synthetic peptide located within the following region: NLESLMNVPLFKYKSTVQVCNSILCPKTGREKRKSPENRFLRKLKPDIE |
| Formulation: | Liquid. Purified antibody supplied in 1x PBS buffer with 0.09% (w/v) sodium azide and 2% sucrose. |
| Conjugation: | Unconjugated |
| Storage: | Store at -20°C as received. |
| Stability: | Stable for 12 months from date of receipt. |
| Predicted Protein Size: | 25 kDa |
| Gene Name: | transcription elongation factor, mitochondrial |
| Database Link: | NP_078959 Entrez Gene 79736 Human Q96QE5 |
| Background: | TEFM is a transcription elongation factor which increases mitochondrial RNA polymerase processivity. It regulates transcription of the mitochondrial genome, including genes important for the oxidative phosphorylation machinery. |
| Synonyms: | C17orf42 |
| Note: | Immunogen sequence homology: Human: 100% |



[View online »](#)

Product images:

Host: Rabbit; Target Name: TEFM; Sample Tissue: THP-1 Whole Cell lysates; Antibody Dilution: 1.0ug/ml