

Product datasheet for TA331736

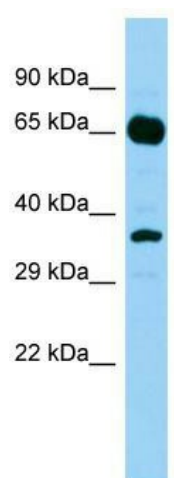
HHIPL2 Rabbit Polyclonal Antibody

Product data:

Product Type:	Primary Antibodies
Applications:	WB
Recommended Dilution:	WB
Reactivity:	Human
Host:	Rabbit
Isotype:	IgG
Clonality:	Polyclonal
Immunogen:	The immunogen for Anti-HHIPL2 Antibody is: synthetic peptide directed towards the C-terminal region of Human HHIPL2. Synthetic peptide located within the following region: PGKCKYKVPVVRTKSKRIPFRPLAKTVLDLLKEQSEKAARKSSSATLASG
Formulation:	Liquid. Purified antibody supplied in 1x PBS buffer with 0.09% (w/v) sodium azide and 2% sucrose. <i>Note that this product is shipped as lyophilized powder to China customers.</i>
Conjugation:	Unconjugated
Storage:	Store at -20°C as received.
Stability:	Stable for 12 months from date of receipt.
Predicted Protein Size:	58 kDa
Gene Name:	HHIP like 2
Database Link:	NP_079022 Entrez Gene 79802 Human Q6UWX4
Background:	The function of this protein remains unknown.
Synonyms:	KIAA1822L
Note:	Immunogen sequence homology: Human: 100%; Bovine: 93%; Dog: 86%; Pig: 79%; Horse: 79%
Protein Families:	Transmembrane



[View online »](#)

Product images:

Host: Rabbit; Target Name: HHIPL2; Sample Tissue: Fetal Lung lysates; Antibody Dilution: 1.0ug/ml