

Product datasheet for **TA331734**

PTCD2 Rabbit Polyclonal Antibody

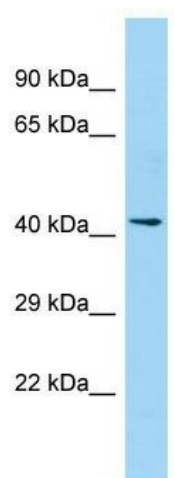
Product data:

Product Type:	Primary Antibodies
Applications:	WB
Recommended Dilution:	WB
Reactivity:	Human
Host:	Rabbit
Isotype:	IgG
Clonality:	Polyclonal
Immunogen:	The immunogen for Anti-PTCD2 Antibody is: synthetic peptide directed towards the N-terminal region of Human PTCD2. Synthetic peptide located within the following region: AVACNLSGTKETYFRNLKKKLTQNKLILKGELITLLHLCESRDHVELAKN
Formulation:	Liquid. Purified antibody supplied in 1x PBS buffer with 0.09% (w/v) sodium azide and 2% sucrose. <i>Note that this product is shipped as lyophilized powder to China customers.</i>
Purification:	Affinity Purified
Conjugation:	Unconjugated
Storage:	Store at -20°C as received.
Stability:	Stable for 12 months from date of receipt.
Predicted Protein Size:	43 kDa
Gene Name:	pentatricopeptide repeat domain 2
Database Link:	NP_079030 Entrez Gene 79810 Human Q8WV60
Background:	PTCD2 is involved in mitochondrial RNA maturation and mitochondrial respiratory chain function.
Synonyms:	FLJ12598
Note:	Immunogen sequence homology: Human: 100%; Rabbit: 100%; Rat: 91%; Pig: 90%; Mouse: 90%; Guinea pig: 90%



[View online »](#)

Product images:



Host: Rabbit; Target Name: PTCD2; Sample
Tissue: PANC1 Whole Cell lysates; Antibody
Dilution: 1.0ug/ml