

Product datasheet for TA331732

PDZD3 Rabbit Polyclonal Antibody

Product data:

Product Type:	Primary Antibodies
Applications:	WB
Recommended Dilution:	WB
Reactivity:	Human
Host:	Rabbit
Isotype:	IgG
Clonality:	Polyclonal
Immunogen:	The immunogen for Anti-PDZD3 Antibody is: synthetic peptide directed towards the N-terminal region of Human PDZD3. Synthetic peptide located within the following region: PDPWSLERPRFCLLSKEEGKSFGFHLQQELGRAGHVVCVRDPGTSAQRQG
Formulation:	Liquid. Purified antibody supplied in 1x PBS buffer with 0.09% (w/v) sodium azide and 2% sucrose. <i>Note that this product is shipped as lyophilized powder to China customers.</i>
Conjugation:	Unconjugated
Storage:	Store at -20°C as received.
Stability:	Stable for 12 months from date of receipt.
Predicted Protein Size:	42 kDa
Gene Name:	PDZ domain containing 3
Database Link:	NP_079067 Entrez Gene 79849 Human Q86UT5
Background:	Guanylyl cyclase C (GCC, or GUCY2C; MIM 601330) produces cGMP following the binding of either endogenous ligands or heat-stable enterotoxins secreted by E. coli and other enteric bacteria. Activation of GCC initiates a signaling cascade that leads to phosphorylation of the cystic fibrosis transmembrane conductance regulator (CFTR; MIM 602421), followed by a net efflux of ions and water into the intestinal lumen. IKEPP is a regulatory protein that associates with GCC and regulates the amount of cGMP produced following receptor stimulation.



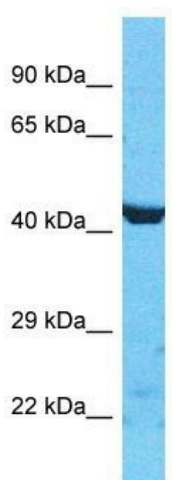
[View online »](#)

Synonyms: IKEPP; NHERF4; PDZK2

Note: Immunogen sequence homology: Pig: 100%; Human: 100%; Dog: 93%; Rat: 93%; Guinea pig: 93%; Mouse: 86%; Rabbit: 86%; Horse: 79%; Bovine: 79%

Protein Families: Druggable Genome

Product images:



Host: Rabbit

Target Name: PDZD3

Sample Tissue: HepG2 Cell Lysate

Antibody Dilution: 1.0µg/ml

Host: Rabbit; Target Name: PDZD3; Sample Tissue: HepG2 Whole Cell lysates; Antibody Dilution: 1.0ug/ml