

## Product datasheet for **TA331731**

### CCDC134 Rabbit Polyclonal Antibody

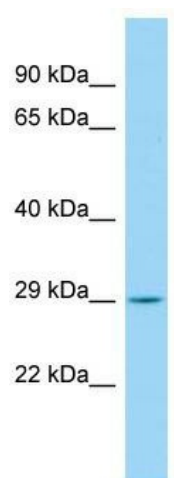
#### Product data:

Product Type:	Primary Antibodies
Applications:	WB
Recommended Dilution:	WB
Reactivity:	Human
Host:	Rabbit
Isotype:	IgG
Clonality:	Polyclonal
Immunogen:	The immunogen for Anti-CCDC134 Antibody is: synthetic peptide directed towards the C-terminal region of Human CCDC134. Synthetic peptide located within the following region: GISFCNQGTGVFNQGPILSLMAQELGISEKDSNFQNPFKIDRTEFIPS
Formulation:	Liquid. Purified antibody supplied in 1x PBS buffer with 0.09% (w/v) sodium azide and 2% sucrose. <i>Note that this product is shipped as lyophilized powder to China customers.</i>
Conjugation:	Unconjugated
Storage:	Store at -20°C as received.
Stability:	Stable for 12 months from date of receipt.
Predicted Protein Size:	25 kDa
Gene Name:	coiled-coil domain containing 134
Database Link:	<a href="#">NP_079097</a> <a href="#">Entrez Gene 79879 Human Q9H6E4</a>
Background:	The function of this protein remains unknown.
Synonyms:	dj821D11.3
Note:	Immunogen sequence homology: Human: 100%; Dog: 93%; Rat: 93%; Horse: 93%; Rabbit: 93%; Pig: 86%; Bovine: 86%; Guinea pig: 86%; Mouse: 79%
Protein Families:	Secreted Protein



[View online »](#)

## Product images:



Host: Rabbit; Target Name: CCDC134; Sample  
Tissue: Fetal Kidney lysates; Antibody Dilution:  
1.0ug/ml