

Product datasheet for **TA331730**

PYROXD1 Rabbit Polyclonal Antibody

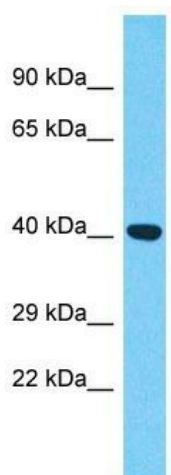
Product data:

Product Type:	Primary Antibodies
Applications:	WB
Recommended Dilution:	WB
Reactivity:	Human
Host:	Rabbit
Isotype:	IgG
Clonality:	Polyclonal
Immunogen:	The immunogen for Anti-PYROXD1 Antibody is: synthetic peptide directed towards the N-terminal region of Human PYROXD1. Synthetic peptide located within the following region: IESGVKQLKSEEHCIVTEDGNQHVKLCLCAGAKPKLICEGPNPYVLGIR
Formulation:	Liquid. Purified antibody supplied in 1x PBS buffer with 0.09% (w/v) sodium azide and 2% sucrose. <i>Note that this product is shipped as lyophilized powder to China customers.</i>
Conjugation:	Unconjugated
Storage:	Store at -20°C as received.
Stability:	Stable for 12 months from date of receipt.
Predicted Protein Size:	47 kDa
Gene Name:	pyridine nucleotide-disulphide oxidoreductase domain 1
Database Link:	NP_079130 Entrez Gene 79912 Human Q8WU10
Background:	The function of this protein remains unknown.
Synonyms:	FLJ22028
Note:	Immunogen sequence homology: Human: 100%; Pig: 93%; Horse: 93%; Guinea pig: 93%; Bovine: 92%; Rabbit: 79%
Protein Families:	Druggable Genome



[View online »](#)

Product images:



Host: Rabbit

Target Name: PYROXD1

Sample Tissue: COLO205 Cell Lysate

Antibody Dilution: 1.0 μ g/ml

Host: Rabbit; Target Name: PYROXD1; Sample Tissue: COLO205 Whole Cell lysates; Antibody Dilution: 1.0 μ g/ml