

Product datasheet for **TA331729**

PREX2 Rabbit Polyclonal Antibody

Product data:

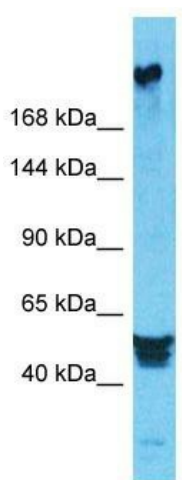
Product Type:	Primary Antibodies
Applications:	WB
Recommended Dilution:	WB
Reactivity:	Human
Host:	Rabbit
Isotype:	IgG
Clonality:	Polyclonal
Immunogen:	The immunogen for Anti-PREX2 Antibody is: synthetic peptide directed towards the N-terminal region of Human PREX2. Synthetic peptide located within the following region: ERDYVGTLEFLVSAFLHRMNQCAASKVDKNVTEETVKMLFSNIEDILAVH
Formulation:	Liquid. Purified antibody supplied in 1x PBS buffer with 0.09% (w/v) sodium azide and 2% sucrose.
Conjugation:	Unconjugated
Storage:	Store at -20°C as received.
Stability:	Stable for 12 months from date of receipt.
Predicted Protein Size:	182 kDa
Gene Name:	phosphatidylinositol-3,4,5-trisphosphate dependent Rac exchange factor 2
Database Link:	NP_079146 Entrez Gene 80243 Human Q70Z35
Background:	PREX2 functions as a RAC1 guanine nucleotide exchange factor (GEF), activating Rac proteins by exchanging bound GDP for free GTP. Its activity is synergistically activated by phosphatidylinositol 3,4,5-trisphosphate and the beta gamma subunits of heterotrimeric G protein. PREX2 mediates the activation of RAC1 in a PI3K-dependent manner. PREX2 may be an important mediator of Rac signaling, acting directly downstream of both G protein-coupled receptors and phosphoinositide 3-kinase.
Synonyms:	DEP.2; DEPDC2; P-REX2; PPP1R129



[View online »](#)

Note: Immunogen sequence homology: Pig: 100%; Horse: 100%; Human: 100%; Rabbit: 100%; Dog: 93%; Rat: 93%; Mouse: 93%; Bovine: 93%; Zebrafish: 86%

Product images:



Host: Rabbit
Target Name: PREX2
Sample Tissue: HeLa Cell Lysate
Antibody Dilution: 1.0 μ g/ml

Host: Rabbit; Target Name: PREX2; Sample Tissue: HeLa Whole Cell lysates; Antibody Dilution: 1.0ug/ml