

Product datasheet for **TA331727**

DENND1C Rabbit Polyclonal Antibody

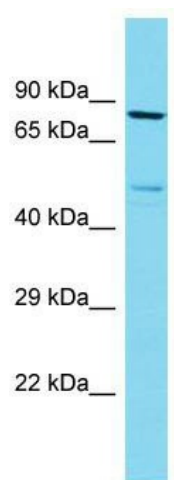
Product data:

Product Type:	Primary Antibodies
Applications:	WB
Recommended Dilution:	WB
Reactivity:	Human
Host:	Rabbit
Isotype:	IgG
Clonality:	Polyclonal
Immunogen:	The immunogen for Anti-DENND1C Antibody is: synthetic peptide directed towards the C-terminal region of Human DENND1C. Synthetic peptide located within the following region: PSSLEDPRARPPKALLAERAHLQPREEPGALNSPATPTSNCQKSQPSSRP
Formulation:	Liquid. Purified antibody supplied in 1x PBS buffer with 0.09% (w/v) sodium azide and 2% sucrose.
Conjugation:	Unconjugated
Storage:	Store at -20°C as received.
Stability:	Stable for 12 months from date of receipt.
Predicted Protein Size:	87 kDa
Gene Name:	DENN domain containing 1C
Database Link:	NP_079174 Entrez Gene 79958 Human Q8IV53
Background:	Clathrin-mediated endocytosis is a major mechanism for internalization of proteins and lipids. Members of the connecdenn family, such as DENND1C, function as guanine nucleotide exchange factors (GEFs) for the early endosomal small GTPase RAB35 and bind to clathrin and clathrin adaptor protein-2. Thus, connecdenns link RAB35 activation with the clathrin machinery.
Synonyms:	FAM31C
Note:	Immunogen sequence homology: Human: 100%



[View online »](#)

Product images:



Host: Rabbit; Target Name: DENND1C; Sample
Tissue: MCF7 Whole Cell lysates; Antibody
Dilution: 1.0ug/ml