

Product datasheet for TA331726

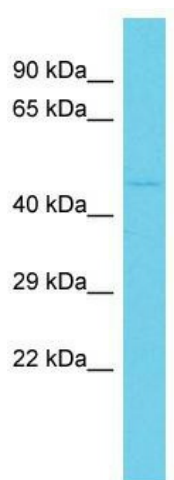
C10orf88 Rabbit Polyclonal Antibody

Product data:

Product Type:	Primary Antibodies
Applications:	WB
Recommended Dilution:	WB
Reactivity:	Human
Host:	Rabbit
Isotype:	IgG
Clonality:	Polyclonal
Immunogen:	The immunogen for Anti-C10orf88 Antibody is: synthetic peptide directed towards the C-terminal region of Human C10orf88. Synthetic peptide located within the following region: ELLPFLQNLCSQVNHHLHVGNKTECQENITKHGERILGVGMEEQSICSYLE
Formulation:	Liquid. Purified antibody supplied in 1x PBS buffer with 0.09% (w/v) sodium azide and 2% sucrose. <i>Note that this product is shipped as lyophilized powder to China customers.</i>
Conjugation:	Unconjugated
Storage:	Store at -20°C as received.
Stability:	Stable for 12 months from date of receipt.
Predicted Protein Size:	49 kDa
Gene Name:	chromosome 10 open reading frame 88
Database Link:	NP_079218 Entrez Gene 80007 Human Q9H8K7
Background:	The function of this protein remains unknown.
Synonyms:	FLJ13490
Note:	Immunogen sequence homology: Human: 100%



[View online »](#)

Product images:

Host: Rabbit; Target Name: C10orf88; Sample Tissue: HCT15 Whole Cell lysates; Antibody Dilution: 1.0ug/ml; C10orf88 is supported by BioGPS gene expression data to be expressed in HCT15