

Product datasheet for TA331725

GPR157 Rabbit Polyclonal Antibody

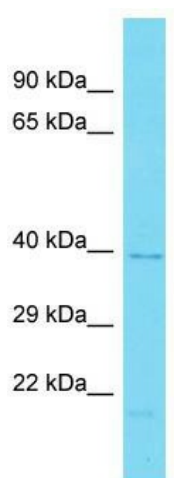
Product data:

Product Type:	Primary Antibodies
Applications:	WB
Recommended Dilution:	WB
Reactivity:	Human
Host:	Rabbit
Isotype:	IgG
Clonality:	Polyclonal
Immunogen:	The immunogen for Anti-GPR157 Antibody is: synthetic peptide directed towards the C-terminal region of Human GPR157. Synthetic peptide located within the following region: VRTRLFSLCCCCSSQPPTKSPAGTPKAPAPSKPGESQESQGTGPELPST
Formulation:	Liquid. Purified antibody supplied in 1x PBS buffer with 0.09% (w/v) sodium azide and 2% sucrose.
Conjugation:	Unconjugated
Storage:	Store at -20°C as received.
Stability:	Stable for 12 months from date of receipt.
Predicted Protein Size:	37 kDa
Gene Name:	G protein-coupled receptor 157
Database Link:	NP_079256 Entrez Gene 80045 Human Q5UAW9
Background:	GPR157 is a orphan receptor.
Synonyms:	FLJ12132
Note:	Immunogen sequence homology: Human: 100%
Protein Families:	Druggable Genome, Transmembrane



[View online »](#)

Product images:



Host: Rabbit; Target Name: GPR157; Sample
Tissue: Hela Whole cell lysates; Antibody Dilution:
1.0ug/ml