

Product datasheet for TA331723

C8ORF41 (TTI2) Rabbit Polyclonal Antibody

Product data:

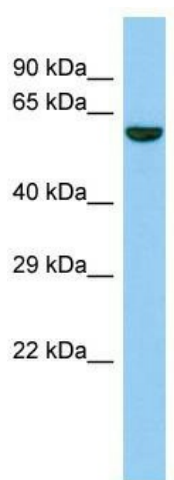
Product Type:	Primary Antibodies
Applications:	WB
Recommended Dilution:	WB
Reactivity:	Human
Host:	Rabbit
Isotype:	IgG
Clonality:	Polyclonal
Immunogen:	The immunogen for Anti-TTI2 Antibody is: synthetic peptide directed towards the N-terminal region of Human TTI2. Synthetic peptide located within the following region: THSLEQPWTTPRSREVAREVLTSLLQVTECGSVAGFLHGENEDEKGRLSV
Formulation:	Liquid. Purified antibody supplied in 1x PBS buffer with 0.09% (w/v) sodium azide and 2% sucrose. <i>Note that this product is shipped as lyophilized powder to China customers.</i>
Conjugation:	Unconjugated
Storage:	Store at -20°C as received.
Stability:	Stable for 12 months from date of receipt.
Predicted Protein Size:	56 kDa
Gene Name:	TELO2 interacting protein 2
Database Link:	NP_079391 Entrez Gene 80185 Human Q6NXR4
Background:	TTI2 is a regulator of the DNA damage response (DDR). 'TTI2 is part of the TTT complex that is required to stabilize protein levels of the phosphatidylinositol 3-kinase-related protein kinase (PIKK) family proteins. The TTT complex is involved in the cellular resistance to DNA damage stresses, like ionizing radiation (IR), ultraviolet (UV) and mitomycin C (MMC). 'TTI2, together with the TTT complex and HSP90 may participate in the proper folding of newly synthesized PIKKs.
Synonyms:	C8orf41; MRT39



[View online »](#)

Note: Immunogen sequence homology: Horse: 100%; Human: 100%; Bovine: 100%; Dog: 92%; Pig: 92%; Rabbit: 75%; Guinea pig: 75%

Product images:



Host: Rabbit; Target Name: TTI2; Sample Tissue: Fetal Heart lysates; Antibody Dilution: 1.0ug/ml