

## Product datasheet for **TA331722**

### HKDC1 Rabbit Polyclonal Antibody

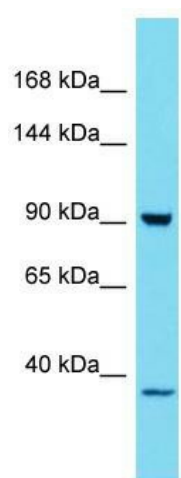
#### Product data:

Product Type:	Primary Antibodies
Applications:	WB
Recommended Dilution:	WB
Reactivity:	Human
Host:	Rabbit
Isotype:	IgG
Clonality:	Polyclonal
Immunogen:	The immunogen for Anti-HKDC1 Antibody is: synthetic peptide directed towards the C-terminal region of Human HKDC1. Synthetic peptide located within the following region: TCEDSIVVKEVCGAVSRRAAQLCGAGLAAIVEKRREDQGLEHLRITVGVD
Formulation:	Liquid. Purified antibody supplied in 1x PBS buffer with 0.09% (w/v) sodium azide and 2% sucrose.
Conjugation:	Unconjugated
Storage:	Store at -20°C as received.
Stability:	Stable for 12 months from date of receipt.
Predicted Protein Size:	102 kDa
Gene Name:	hexokinase domain containing 1
Database Link:	<a href="#">NP_079406</a> <a href="#">Entrez Gene 80201 Human</a> <a href="#">Q2TB90</a>
Background:	The function of this protein remains unknown.
Synonyms:	FLJ22761; FLJ37767; MGC125688
Note:	Immunogen sequence homology: Human: 100%; Horse: 93%; Bovine: 93%; Rabbit: 93%; Pig: 92%; Mouse: 92%; Dog: 85%; Rat: 85%
Protein Families:	Druggable Genome



[View online »](#)

## Product images:



Host: Rabbit; Target Name: HKDC1; Sample  
Tissue: 293T Whole Cell lysates; Antibody  
Dilution: 1.0ug/ml