

## Product datasheet for TA331721

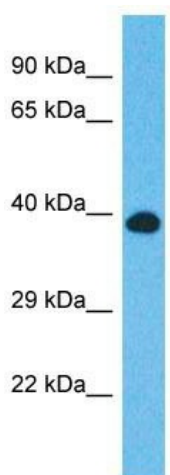
### CCDC92 Rabbit Polyclonal Antibody

#### Product data:

|                         |  |
|-------------------------|--|
| Product Type:           | Primary Antibodies   |
| Applications:           | WB   |
| Recommended Dilution:   | WB   |
| Reactivity:             | Human  |
| Host:                   | Rabbit   |
| Isotype:                | IgG  |
| Clonality:              | Polyclonal   |
| Immunogen:              | The immunogen for Anti-CCDC92 Antibody is: synthetic peptide directed towards the N-terminal region of Human CCDC92. Synthetic peptide located within the following region: EIRRLQQHCTDLTYELTVKSSEQTGDGTSKSSELKKRCEELEAQLKVKEN |
| Formulation:            | Liquid. Purified antibody supplied in 1x PBS buffer with 0.09% (w/v) sodium azide and 2% sucrose.  |
| Conjugation:            | Unconjugated   |
| Storage:                | Store at -20°C as received.  |
| Stability:              | Stable for 12 months from date of receipt.   |
| Predicted Protein Size: | 36 kDa   |
| Gene Name:              | coiled-coil domain containing 92   |
| Database Link:          | <a href="#">NP_079416</a><br><a href="#">Entrez Gene 80212 Human</a><br><a href="#">Q53HC0</a>   |
| Background:             | The function of this protein remains unknown.  |
| Synonyms:               | FLJ22471   |
| Note:                   | Immunogen sequence homology: Human: 100%; Horse: 86%; Dog: 79%; Bovine: 79%; Rabbit: 79%   |



[View online »](#)

**Product images:**

Host: Rabbit  
Target Name: CCDC92  
Sample Tissue: HepG2 Cell Lysate  
Antibody Dilution: 1.0 $\mu$ g/ml

Host: Rabbit; Target Name: CCDC92; Sample Tissue: HepG2 Whole cell lysates; Antibody Dilution: 1.0 $\mu$ g/ml. CCDC92 is supported by BioGPS gene expression data to be expressed in HepG2