

Product datasheet for **TA331718**

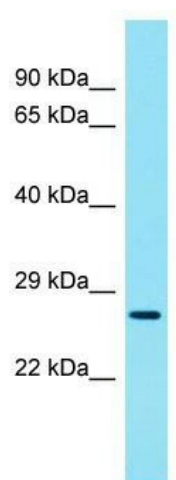
Ccdc59 Rabbit Polyclonal Antibody

Product data:

Product Type:	Primary Antibodies
Applications:	WB
Recommended Dilution:	WB
Reactivity:	Mouse
Host:	Rabbit
Isotype:	IgG
Clonality:	Polyclonal
Immunogen:	The immunogen for Anti-Ccdc59 Antibody is: synthetic peptide directed towards the C-terminal region of Mouse Ccdc59. Synthetic peptide located within the following region: KRAAKKFEFEMRKQEREEAQRLYKKKKMEAFKILSKKTKKGQPNLNLQME
Formulation:	Liquid. Purified antibody supplied in 1x PBS buffer with 0.09% (w/v) sodium azide and 2% sucrose. <i>Note that this product is shipped as lyophilized powder to China customers.</i>
Conjugation:	Unconjugated
Storage:	Store at -20°C as received.
Stability:	Stable for 12 months from date of receipt.
Predicted Protein Size:	26 kDa
Gene Name:	coiled-coil domain containing 59
Database Link:	NP_079878 Entrez Gene 52713 Mouse Q8R2N0
Background:	Ccdc59 is a component of the transcription complexes of the pulmonary surfactant-associated protein-B (SFTPB) and -C (SFTPC). It enhances homeobox protein Nkx-2.1-activated SFTPB and SFTPC promoter activities.
Synonyms:	BR22; DKFZp686K1021; FLJ10294; HSPC128; TAP26
Note:	Immunogen sequence homology: Rat: 100%; Human: 100%; Pig: 93%; Horse: 93%; Bovine: 93%; Mouse: 92%; Guinea pig: 91%; Rabbit: 86%; Dog: 85%; Yeast: 82%



[View online »](#)

Product images:

Host: Rabbit; Target Name: Ccdc59; Sample
Tissue: Mouse Thymus lysates; Antibody Dilution:
1.0ug/ml