

Product datasheet for TA331717

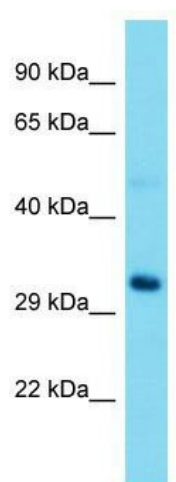
Rrp15 Rabbit Polyclonal Antibody

Product data:

Product Type:	Primary Antibodies
Applications:	WB
Recommended Dilution:	WB
Reactivity:	Mouse
Host:	Rabbit
Isotype:	IgG
Clonality:	Polyclonal
Immunogen:	The immunogen for Anti-Rrp15 Antibody is: synthetic peptide directed towards the middle region of Mouse Rrp15. Synthetic peptide located within the following region: DVVKDKEAERNLQRIATRGGVQLFNAVQKHQRNVGKVKKEAGGSVRKRAK
Formulation:	Liquid. Purified antibody supplied in 1x PBS buffer with 0.09% (w/v) sodium azide and 2% sucrose. <i>Note that this product is shipped as lyophilized powder to China customers.</i>
Conjugation:	Unconjugated
Storage:	Store at -20°C as received.
Stability:	Stable for 12 months from date of receipt.
Predicted Protein Size:	31 kDa
Gene Name:	ribosomal RNA processing 15 homolog (<i>S. cerevisiae</i>)
Database Link:	NP_080317 Entrez Gene 67223 Mouse Q9CYX7
Background:	This gene encodes a protein similar to budding yeast Rrp15p. Rrp15p is a component of pre-60S ribosomal particles in budding yeast, and is required for the early maturation steps of the 60S subunit. The mouse genome contains at least one pseudogene on the X chromosome.
Synonyms:	CGI-115; KIAA0507; MGC22291
Note:	Immunogen sequence homology: Dog: 100%; Pig: 100%; Human: 100%; Bovine: 100%; Rabbit: 100%; Guinea pig: 100%; Rat: 93%; Horse: 93%; Mouse: 86%



[View online »](#)

Product images:

Host: Rabbit; Target Name: Rrp15; Sample Tissue: Mouse Brain lysates; Antibody Dilution: 1.0ug/ml