

Product datasheet for TA331716

Tbc1d23 Rabbit Polyclonal Antibody

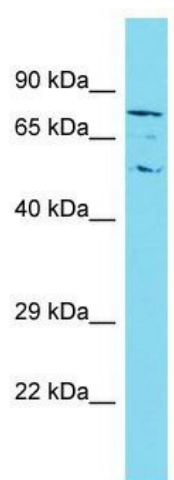
Product data:

Product Type:	Primary Antibodies
Applications:	WB
Recommended Dilution:	WB
Reactivity:	Mouse
Host:	Rabbit
Isotype:	IgG
Clonality:	Polyclonal
Immunogen:	The immunogen for Anti-Tbc1d23 Antibody is: synthetic peptide directed towards the C-terminal region of Mouse Tbc1d23. Synthetic peptide located within the following region: SKKKHPELITFKYGNSSASGIEILAIERYLIPNAGDATRAIKQIMKVL
Formulation:	Liquid. Purified antibody supplied in 1x PBS buffer with 0.09% (w/v) sodium azide and 2% sucrose. <i>Note that this product is shipped as lyophilized powder to China customers.</i>
Conjugation:	Unconjugated
Storage:	Store at -20°C as received.
Stability:	Stable for 12 months from date of receipt.
Predicted Protein Size:	75 kDa
Gene Name:	TBC1 domain family, member 23
Database Link:	NP_080530 Entrez Gene 67581 Mouse Q8K0F1
Background:	The function of this protein remains unknown.
Synonyms:	4930451A13Rik; AU015720; AU043671; AU043778; D030022P07Rik; RGD1307925; W51689
Note:	Immunogen sequence homology: Dog: 100%; Horse: 100%; Human: 100%; Bovine: 100%; Rabbit: 100%; Pig: 93%; Rat: 93%; Mouse: 93%; Zebrafish: 93%; Guinea pig: 93%



[View online »](#)

Product images:



Host: Rabbit; Target Name: Tbc1d23; Sample
Tissue: Mouse Spleen lysates; Antibody Dilution:
1.0ug/ml