

Product datasheet for TA331715

Dapl1 Rabbit Polyclonal Antibody

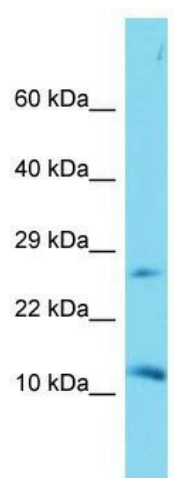
Product data:

Product Type:	Primary Antibodies
Applications:	WB
Recommended Dilution:	WB
Reactivity:	Mouse
Host:	Rabbit
Isotype:	IgG
Clonality:	Polyclonal
Immunogen:	The immunogen for Anti-Dapl1 Antibody is: synthetic peptide directed towards the N-terminal region of Mouse Dapl1. Synthetic peptide located within the following region: MANEVQVLPSPKGRYAPAVKAGGMRISKQEMGVLERHTKKTGLEKTS
Formulation:	Liquid. Purified antibody supplied in 1x PBS buffer with 0.09% (w/v) sodium azide and 2% sucrose. <i>Note that this product is shipped as lyophilized powder to China customers.</i>
Conjugation:	Unconjugated
Storage:	Store at -20°C as received.
Stability:	Stable for 12 months from date of receipt.
Predicted Protein Size:	12 kDa
Gene Name:	death associated protein-like 1
Database Link:	NP_083999 Entrez Gene 76747 Mouse Q9D757
Background:	Dapl1 may play a role in the early stages of epithelial differentiation or in apoptosis.
Synonyms:	EEDA
Note:	Immunogen sequence homology: Human: 100%; Rat: 86%; Mouse: 86%; Bovine: 86%; Dog: 79%; Pig: 79%



[View online »](#)

Product images:



Host: Rabbit; Target Name: Dapl1; Sample Tissue: Mouse Kidney lysates; Antibody Dilution: 1.0ug/ml