

Product datasheet for **TA331714**

B9D2 Rabbit Polyclonal Antibody

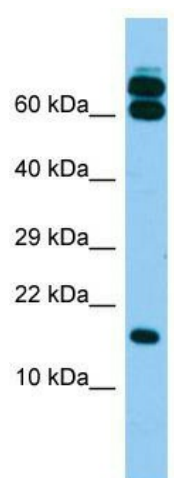
Product data:

Product Type:	Primary Antibodies
Applications:	WB
Recommended Dilution:	WB
Reactivity:	Human
Host:	Rabbit
Isotype:	IgG
Clonality:	Polyclonal
Immunogen:	The immunogen for Anti-B9D2 Antibody is: synthetic peptide directed towards the N-terminal region of Human B9D2. Synthetic peptide located within the following region: SESSLFCKWGIHTGAAWKLLSGVREGQTQVDTPQIGDMAYWSPIDLHFA
Formulation:	Liquid. Purified antibody supplied in 1x PBS buffer with 0.09% (w/v) sodium azide and 2% sucrose. <i>Note that this product is shipped as lyophilized powder to China customers.</i>
Conjugation:	Unconjugated
Storage:	Store at -20°C as received.
Stability:	Stable for 12 months from date of receipt.
Predicted Protein Size:	19 kDa
Gene Name:	B9 protein domain 2
Database Link:	NP_085055 Entrez Gene 80776 Human Q9BPU9
Background:	This gene encodes a B9 domain protein, which are exclusively found in ciliated organisms. The gene is upregulated during mucociliary differentiation, and the encoded protein localizes to basal bodies and cilia. Disrupting expression of this gene results in ciliogenesis defects.
Synonyms:	ICIS-1; MKS10; MKSR2
Note:	Immunogen sequence homology: Dog: 100%; Pig: 100%; Rat: 100%; Horse: 100%; Human: 100%; Mouse: 100%; Bovine: 100%; Rabbit: 100%; Guinea pig: 100%; Zebrafish: 86%



[View online »](#)

Product images:



Host: Rabbit; Target Name: B9D2; Sample Tissue: Fetal Brain lysates; Antibody Dilution: 1.0ug/ml