

Product datasheet for **TA331713**

CYP2S1 Rabbit Polyclonal Antibody

Product data:

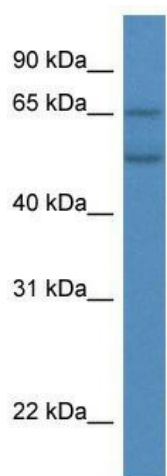
Product Type:	Primary Antibodies
Applications:	WB
Recommended Dilution:	WB
Reactivity:	Human
Host:	Rabbit
Isotype:	IgG
Clonality:	Polyclonal
Immunogen:	The immunogen for Anti-CYP2S1 Antibody: synthetic peptide directed towards the C terminal of human CYP2S1. Synthetic peptide located within the following region: MKYPHVQKWWREELNRELGAGQAPSLGDRTRLPYTD AVLHEAQRL LALVP
Formulation:	Liquid. Purified antibody supplied in 1x PBS buffer with 0.09% (w/v) sodium azide and 2% sucrose. <i>Note that this product is shipped as lyophilized powder to China customers.</i>
Purification:	Affinity Purified
Conjugation:	Unconjugated
Storage:	Store at -20°C as received.
Stability:	Stable for 12 months from date of receipt.
Predicted Protein Size:	56 kDa
Gene Name:	cytochrome P450 family 2 subfamily S member 1
Database Link:	NP_085125 Entrez Gene 29785 Human Q96SQ9
Background:	CYP2S1 has a potential importance for extrahepatic xenobiotic metabolism.
Synonyms:	CYPIIS1
Note:	Immunogen sequence homology: Human: 100%; Dog: 93%; Pig: 93%; Rat: 93%; Bovine: 93%; Rabbit: 93%; Mouse: 90%; Goat: 83%; Sheep: 83%; Horse: 82%; Guinea pig: 82%
Protein Families:	Druggable Genome, P450, Transmembrane



[View online »](#)

Protein Pathways: Metabolism of xenobiotics by cytochrome P450

Product images:



WB Suggested Anti-CYP2S1 Antibody Titration:
0.2-1 ug/ml; ELISA Titer: 1: 312500; Positive
Control: ACHN cell lysate