

## Product datasheet for TA331711

### RSPH6A Rabbit Polyclonal Antibody

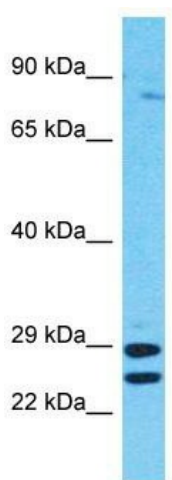
#### Product data:

Product Type:	Primary Antibodies
Applications:	WB
Recommended Dilution:	WB
Reactivity:	Human
Host:	Rabbit
Isotype:	IgG
Clonality:	Polyclonal
Immunogen:	The immunogen for Anti-RSPH6A Antibody is: synthetic peptide directed towards the C-terminal region of Human RSPH6A. Synthetic peptide located within the following region: MANWVHHTQHILPQGRCTWVNPLQKTEEEEDLGEEEEKADEGPVEVEQEV
Formulation:	Liquid. Purified antibody supplied in 1x PBS buffer with 0.09% (w/v) sodium azide and 2% sucrose.
Conjugation:	Unconjugated
Storage:	Store at -20°C as received.
Stability:	Stable for 12 months from date of receipt.
Predicted Protein Size:	78 kDa
Gene Name:	radial spoke head 6 homolog A
Database Link:	<a href="#">NP_110412</a> <a href="#">Entrez Gene 81492 Human</a> <a href="#">Q9H0K4</a>
Background:	The protein encoded by this gene is similar to a sea urchin radial spoke head protein. Radial spoke protein complexes form part of the axoneme of eukaryotic flagella and are located between the axoneme's outer ring of doublet microtubules and central pair of microtubules. In Chlamydomonas, radial spoke proteins are thought to regulate the activity of dynein and the symmetry of flagellar bending patterns. This gene maps to a region of chromosome 19 that is linked to primary ciliary dyskinesia-2 (CILD2).
Synonyms:	RSHL1; RSP4; RSP6; RSPH4B


[View online »](#)

**Note:** Immunogen sequence homology: Human: 100%; Dog: 93%; Rat: 93%; Horse: 93%; Bovine: 93%; Mouse: 86%

### Product images:



Host: Rabbit  
Target Name: RSPH6A  
Sample Tissue: HepG2 Cell Lysate  
Antibody Dilution: 1.0µg/ml

Host: Rabbit; Target Name: RSPH6A; Sample Tissue: HepG2 Whole Cell lysates; Antibody Dilution: 1.0ug/ml