

## Product datasheet for **TA331710**

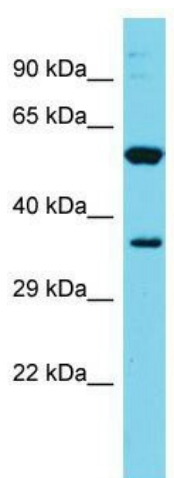
### CYRIA Rabbit Polyclonal Antibody

#### Product data:

Product Type:	Primary Antibodies
Applications:	WB
Recommended Dilution:	WB
Reactivity:	Human
Host:	Rabbit
Isotype:	IgG
Clonality:	Polyclonal
Immunogen:	The immunogen for Anti-FAM49A Antibody is: synthetic peptide directed towards the C-terminal region of Human FAM49A. Synthetic peptide located within the following region: YDHVHPVGAFCKTSKIDMKGCIKVLKEQAPDSVEGLLNALRFTTKHLNDE
Formulation:	Liquid. Purified antibody supplied in 1x PBS buffer with 0.09% (w/v) sodium azide and 2% sucrose.
Conjugation:	Unconjugated
Storage:	Store at -20°C as received.
Stability:	Stable for 12 months from date of receipt.
Predicted Protein Size:	36 kDa
Gene Name:	family with sequence similarity 49 member A
Database Link:	<a href="#">NP_110424</a> <a href="#">Entrez Gene 81553 Human</a> <a href="#">Q9H0QQ</a>
Background:	The function of this protein remains unknown.
Synonyms:	DKFZp566A1524; FLJ11080; FLJ33961
Note:	Immunogen sequence homology: Dog: 100%; Pig: 100%; Rat: 100%; Horse: 100%; Human: 100%; Mouse: 100%; Bovine: 100%; Rabbit: 100%; Guinea pig: 100%; Zebrafish: 79%



[View online »](#)

**Product images:**

Host: Rabbit; Target Name: FAM49A; Sample Tissue: ACHN Whole cell lysates; Antibody Dilution: 1.0ug/ml. FAM49A is strongly supported by BioGPS gene expression data to be expressed in Human ACHN cells