

Product datasheet for **TA331708**

FAM117A Rabbit Polyclonal Antibody

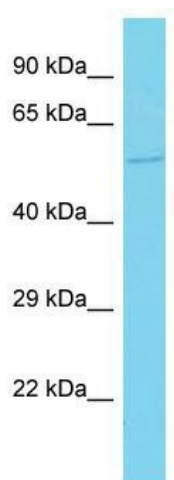
Product data:

Product Type:	Primary Antibodies
Applications:	WB
Recommended Dilution:	WB
Reactivity:	Human
Host:	Rabbit
Isotype:	IgG
Clonality:	Polyclonal
Immunogen:	The immunogen for Anti-FAM117A Antibody is: synthetic peptide directed towards the N-terminal region of Human FAM117A. Synthetic peptide located within the following region: SWGSTDHRKEISKLKQQLQRTKLSRSGKEKERGSPLLGDHAVRGALRASP
Formulation:	Liquid. Purified antibody supplied in 1x PBS buffer with 0.09% (w/v) sodium azide and 2% sucrose. <i>Note that this product is shipped as lyophilized powder to China customers.</i>
Conjugation:	Unconjugated
Storage:	Store at -20°C as received.
Stability:	Stable for 12 months from date of receipt.
Predicted Protein Size:	50 kDa
Gene Name:	family with sequence similarity 117 member A
Database Link:	NP_110429 Entrez Gene 81558 Human Q9C073
Background:	The function of this protein remains unknown.
Synonyms:	C; EBP-induced protein; EBP induced protein; family with sequence similarity 117; member A
Note:	Immunogen sequence homology: Dog: 100%; Pig: 100%; Rat: 100%; Human: 100%; Bovine: 100%; Rabbit: 100%; Horse: 93%; Guinea pig: 86%; Mouse: 85%



[View online »](#)

Product images:



Host: Rabbit; Target Name: FAM117A; Sample
Tissue: Fetal Brain lysates; Antibody Dilution:
1.0ug/ml