

Product datasheet for **TA331707**

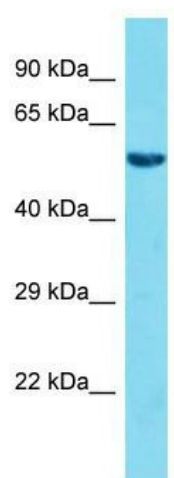
FAM117A Rabbit Polyclonal Antibody

Product data:

Product Type:	Primary Antibodies
Applications:	WB
Recommended Dilution:	WB
Reactivity:	Human
Host:	Rabbit
Isotype:	IgG
Clonality:	Polyclonal
Immunogen:	The immunogen for Anti-FAM117A Antibody is: synthetic peptide directed towards the C-terminal region of Human FAM117A. Synthetic peptide located within the following region: SPRPNHSYIFKREPPEGCEKVRVFEEATSPGPDLAFLTSCPDKNKVHFN
Formulation:	Liquid. Purified antibody supplied in 1x PBS buffer with 0.09% (w/v) sodium azide and 2% sucrose. <i>Note that this product is shipped as lyophilized powder to China customers.</i>
Conjugation:	Unconjugated
Storage:	Store at -20°C as received.
Stability:	Stable for 12 months from date of receipt.
Predicted Protein Size:	50 kDa
Gene Name:	family with sequence similarity 117 member A
Database Link:	NP_110429 Entrez Gene 81558 Human Q9C073
Background:	The function of this protein remains unknown.
Synonyms:	C; EBP-induced protein; EBP induced protein; family with sequence similarity 117; member A
Note:	Immunogen sequence homology: Human: 100%; Pig: 93%; Zebrafish: 93%; Dog: 92%; Rat: 92%; Horse: 92%; Mouse: 92%; Bovine: 92%; Rabbit: 92%; Guinea pig: 92%



[View online »](#)

Product images:

Host: Rabbit; Target Name: FAM117A; Sample Tissue: HepG2 Whole Cell lysates; Antibody Dilution: 1.0ug/ml. FAM117A is supported by BioGPS gene expression data to be expressed in HepG2