

Product datasheet for **TA331706**

CDADC1 Rabbit Polyclonal Antibody

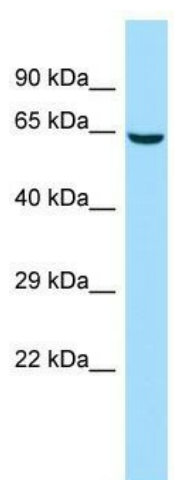
Product data:

Product Type:	Primary Antibodies
Applications:	WB
Recommended Dilution:	WB
Reactivity:	Human
Host:	Rabbit
Isotype:	IgG
Clonality:	Polyclonal
Immunogen:	The immunogen for Anti-CDADC1 Antibody is: synthetic peptide directed towards the C-terminal region of Human CDADC1. Synthetic peptide located within the following region: EGVSKFTWQLNPSGAYGLEQNEPERRENGVLRPVPQKEEQHQDKKLRLLGI
Formulation:	Liquid. Purified antibody supplied in 1x PBS buffer with 0.09% (w/v) sodium azide and 2% sucrose. <i>Note that this product is shipped as lyophilized powder to China customers.</i>
Conjugation:	Unconjugated
Storage:	Store at -20°C as received.
Stability:	Stable for 12 months from date of receipt.
Predicted Protein Size:	57 kDa
Gene Name:	cytidine and dCMP deaminase domain containing 1
Database Link:	NP_112173 Entrez Gene 81602 Human Q9BWW3
Background:	CDADC1 may play an important role in testicular development and spermatogenesis.
Synonyms:	bA103J18.1; NYD-SP15
Note:	Immunogen sequence homology: Human: 100%; Horse: 90%



[View online »](#)

Product images:



Host: Rabbit; Target Name: CDADC1; Sample
Tissue: 293T Whole Cell lysates; Antibody
Dilution: 1.0ug/ml