

Product datasheet for TA331705

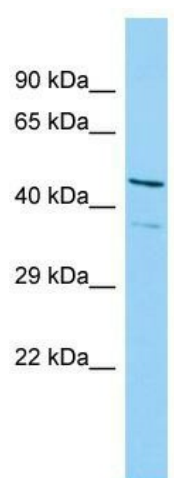
ISG20L2 Rabbit Polyclonal Antibody

Product data:

Product Type:	Primary Antibodies
Applications:	WB
Recommended Dilution:	WB
Reactivity:	Human
Host:	Rabbit
Isotype:	IgG
Clonality:	Polyclonal
Immunogen:	The immunogen for Anti-ISG20L2 Antibody is: synthetic peptide directed towards the N-terminal region of Human ISG20L2. Synthetic peptide located within the following region: KVDLLGEFQSALPKINSHPTRSQKSSQKSSKKNHPQKNAPQNSTQAHS
Formulation:	Liquid. Purified antibody supplied in 1x PBS buffer with 0.09% (w/v) sodium azide and 2% sucrose.
Conjugation:	Unconjugated
Storage:	Store at -20°C as received.
Stability:	Stable for 12 months from date of receipt.
Predicted Protein Size:	39 kDa
Gene Name:	interferon stimulated exonuclease gene 20kDa like 2
Database Link:	NP_112242 Entrez Gene 81875 Human Q9H9L3
Background:	ISG20L2 is a 3'-> 5'-exoribonuclease involved in ribosome biogenesis in the processing of the 12S pre-rRNA. It displays a strong specificity for a 3'-end containing a free hydroxyl group.
Synonyms:	FLJ12671
Note:	Immunogen sequence homology: Human: 100%



[View online »](#)

Product images:

Host: Rabbit; Target Name: ISG20L2; Sample Tissue: MCF7 Whole Cell lysates; Antibody Dilution: 1.0ug/ml; ISG20L2 is strongly supported by BioGPS gene expression data to be expressed in Human MCF7 cells