

Product datasheet for **TA331704**

FAM108A1 (ABHD17A) Rabbit Polyclonal Antibody

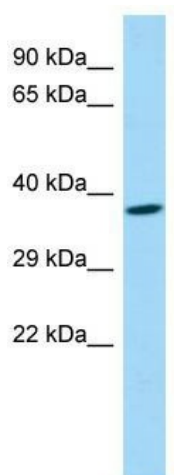
Product data:

Product Type:	Primary Antibodies
Applications:	WB
Recommended Dilution:	WB
Reactivity:	Human
Host:	Rabbit
Isotype:	IgG
Clonality:	Polyclonal
Immunogen:	The immunogen for Anti-FAM108A1 Antibody is: synthetic peptide directed towards the C-terminal region of Human FAM108A1. Synthetic peptide located within the following region: VPTVDLASRYECAAVVLHSP LTSGMRVAFPDTKKTYCFDAFPNIEKVKSI
Formulation:	Liquid. Purified antibody supplied in 1x PBS buffer with 0.09% (w/v) sodium azide and 2% sucrose. <i>Note that this product is shipped as lyophilized powder to China customers.</i>
Conjugation:	Unconjugated
Storage:	Store at -20°C as received.
Stability:	Stable for 12 months from date of receipt.
Predicted Protein Size:	39 kDa
Gene Name:	abhydrolase domain containing 17A
Database Link:	NP_112490 Entrez Gene 81926 Human Q96GS6
Background:	The function of this protein remains unknown.
Synonyms:	C19orf27; FAM108A1
Note:	Immunogen sequence homology: Dog: 100%; Pig: 100%; Rat: 100%; Horse: 100%; Human: 100%; Mouse: 100%; Bovine: 100%; Rabbit: 100%; Zebrafish: 100%; Guinea pig: 100%
Protein Families:	Protease



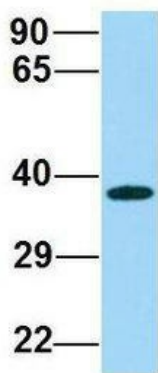
[View online »](#)

Product images:



Host: Rabbit; Target Name: FAM108A1; Sample Tissue: Fetal Brain lysates; Antibody Dilution: 1.0ug/ml

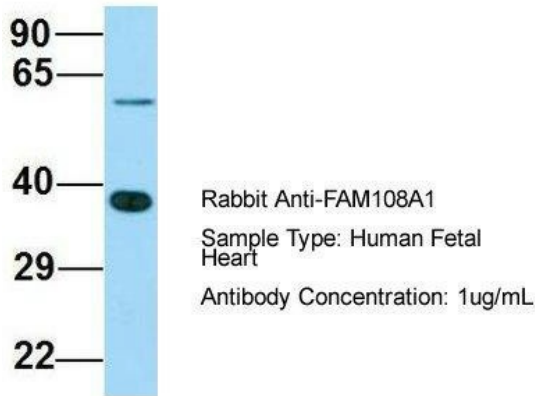
FAM108A1



Rabbit Anti-FAM108A1
 Sample Type: Human Adult Placenta
 Antibody Concentration: 1ug/mL

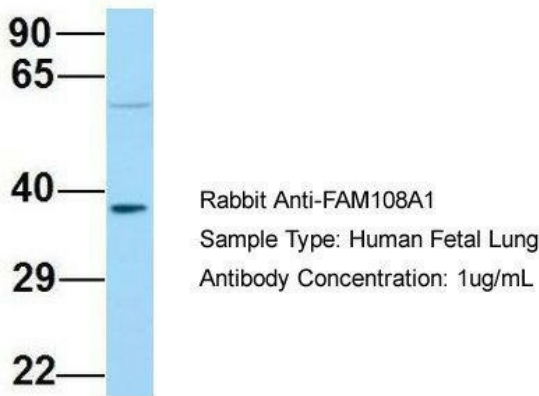
Host: Rabbit; Target Name: FAM108A1; Sample Tissue: Human Adult Placenta; Antibody Dilution: 1.0ug/ml

FAM108A1



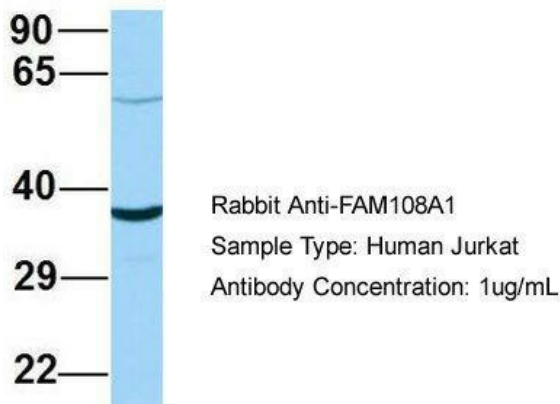
Host: Rabbit; Target Name: FAM108A1; Sample Tissue: Human Jurkat; Antibody Dilution: 1.0ug/ml; ABHD17A is supported by BioGPS gene expression data to be expressed in Jurkat

FAM108A1



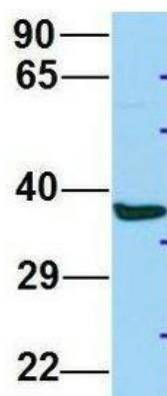
Host: Rabbit; Target Name: FAM108A1; Sample Tissue: Human 293T; Antibody Dilution: 1.0ug/ml; ABHD17A is supported by BioGPS gene expression data to be expressed in HEK293T

FAM108A1



Host: Rabbit; Target Name: FAM108A1; Sample Tissue: Human Fetal Heart; Antibody Dilution: 1.0ug/ml

FAM108A1



Rabbit Anti-FAM108A1
Sample Type: Human 293T
Antibody Concentration: 1ug/mL

Host: Rabbit; Target Name: FAM108A1; Sample
Tissue: Human Fetal Lung; Antibody Dilution:
1.0ug/ml