

## Product datasheet for **TA331703**

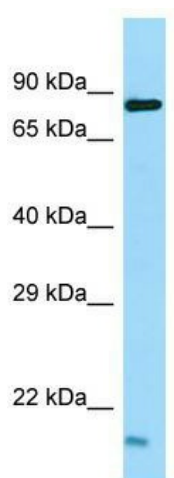
### TEX14 Rabbit Polyclonal Antibody

#### Product data:

Product Type:	Primary Antibodies
Applications:	WB
Recommended Dilution:	WB
Reactivity:	Human
Host:	Rabbit
Isotype:	IgG
Clonality:	Polyclonal
Immunogen:	The immunogen for Anti-Tex35 Antibody is: synthetic peptide directed towards the middle region of Human Tex35. Synthetic peptide located within the following region: LINTQKNYKLPLRRAPKEQQELRLMGKTHREPQLRPKKMDGASGVNGAPC
Formulation:	Liquid. Purified antibody supplied in 1x PBS buffer with 0.09% (w/v) sodium azide and 2% sucrose.
Purification:	Affinity Purified
Conjugation:	Unconjugated
Storage:	Store at -20°C as received.
Stability:	Stable for 12 months from date of receipt.
Predicted Protein Size:	19 kDa
Gene Name:	testis expressed 14, intercellular bridge forming factor
Database Link:	<a href="#">NP_112562</a> <a href="#">Entrez Gene 56155 Human</a> <a href="#">Q8IWB6</a>
Background:	The function of this protein remains unknown.
Synonyms:	CT113
Note:	Immunogen sequence homology: Human: 100%; Dog: 92%; Horse: 85%; Rat: 83%; Rabbit: 77%
Protein Families:	Protein Kinase



[View online »](#)

**Product images:**

Host: Rabbit; Target Name: Tex35; Sample Tissue: NCI-H226 Whole Cell lysates; Antibody Dilution: 1.0ug/ml