

Product datasheet for **TA331701**

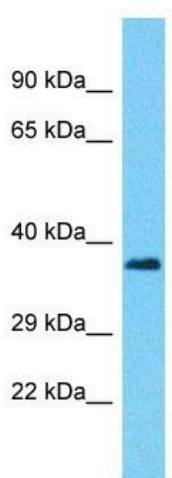
PUS7L Rabbit Polyclonal Antibody

Product data:

Product Type:	Primary Antibodies
Applications:	WB
Recommended Dilution:	WB
Reactivity:	Human
Host:	Rabbit
Isotype:	IgG
Clonality:	Polyclonal
Immunogen:	The immunogen for Anti-PUS7L Antibody is: synthetic peptide directed towards the N-terminal region of Human PUS7L. Synthetic peptide located within the following region: FKISEIQLEPNNFPKPKLDLQNLSELDGRNQEVHTLIKYTDGDQNHQSG
Formulation:	Liquid. Purified antibody supplied in 1x PBS buffer with 0.09% (w/v) sodium azide and 2% sucrose. <i>Note that this product is shipped as lyophilized powder to China customers.</i>
Conjugation:	Unconjugated
Storage:	Store at -20°C as received.
Stability:	Stable for 12 months from date of receipt.
Predicted Protein Size:	40 kDa
Gene Name:	pseudouridylate synthase 7 like
Database Link:	NP_112582 Entrez Gene 83448 Human Q9H0K6
Background:	The function of this protein remains unknown.
Synonyms:	DKFZp434G1415; DKFZp781B2386; FLJ34711; FLJ40012
Note:	Immunogen sequence homology: Human: 100%



[View online »](#)

Product images:

Host: Rabbit
Target Name: PUS7L
Sample Tissue: THP-1 Cell Lysate
Antibody Dilution: 1.0 μ g/ml

Host: Rabbit; Target Name: PUS7L; Sample
Tissue: THP-1 Whole Cell lysates; Antibody
Dilution: 1.0ug/ml