

Product datasheet for **TA331699**

MRPL32 Rabbit Polyclonal Antibody

Product data:

Product Type:	Primary Antibodies
Applications:	WB
Recommended Dilution:	WB
Reactivity:	Human
Host:	Rabbit
Isotype:	IgG
Clonality:	Polyclonal
Immunogen:	The immunogen for Anti-MRPL32 Antibody is: synthetic peptide directed towards the C-terminal region of Human MRPL32. Synthetic peptide located within the following region: CYEKVCKETAIRRQIGKQEGGPFKAPTIVVLYTGETPSEQDQGKRII
Formulation:	Liquid. Purified antibody supplied in 1x PBS buffer with 0.09% (w/v) sodium azide and 2% sucrose.
Conjugation:	Unconjugated
Storage:	Store at -20°C as received.
Stability:	Stable for 12 months from date of receipt.
Predicted Protein Size:	21 kDa
Gene Name:	mitochondrial ribosomal protein L32
Database Link:	NP_114109 Entrez Gene 64983 Human Q9BYC8

[View online »](#)

Background:

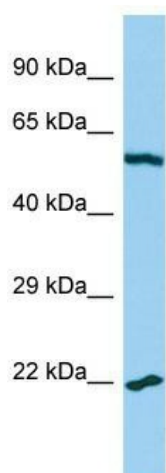
Mammalian mitochondrial ribosomal proteins are encoded by nuclear genes and help in protein synthesis within the mitochondrion. Mitochondrial ribosomes (mitoribosomes) consist of a small 28S subunit and a large 39S subunit. They have an estimated 75% protein to rRNA composition compared to prokaryotic ribosomes, where this ratio is reversed. Another difference between mammalian mitoribosomes and prokaryotic ribosomes is that the latter contain a 5S rRNA. Among different species, the proteins comprising the mitoribosome differ greatly in sequence, and sometimes in biochemical properties, which prevents easy recognition by sequence homology. This gene encodes a 39S subunit protein that belongs to the L32 ribosomal protein family. A pseudogene corresponding to this gene is found on chromosome Xp.

Synonyms:

bMRP-59b; HSPC283; L32mt; MRP-L32

Note:

Immunogen sequence homology: Pig: 100%; Human: 100%; Rabbit: 93%; Guinea pig: 93%; Sheep: 92%; Bovine: 92%; Dog: 86%; Rat: 86%; Mouse: 86%; Horse: 79%

Product images:


Host: Rabbit; Target Name: MRPL32; Sample Tissue: U937 Whole Cell lysates; Antibody Dilution: 1.0ug/ml