

Product datasheet for **TA331698**

C1orf49 (TEX35) Rabbit Polyclonal Antibody

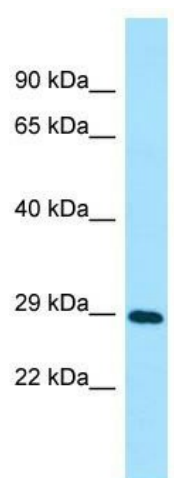
Product data:

Product Type:	Primary Antibodies
Applications:	WB
Recommended Dilution:	WB
Reactivity:	Human
Host:	Rabbit
Isotype:	IgG
Clonality:	Polyclonal
Immunogen:	The immunogen for Anti-C1orf49 Antibody is: synthetic peptide directed towards the C-terminal region of Human C1orf49. Synthetic peptide located within the following region: CLLCALKNYNRGNIPSEASGLYKGGEEPVTTPQSVGHAVPAPKSQTEGR
Formulation:	Liquid. Purified antibody supplied in 1x PBS buffer with 0.09% (w/v) sodium azide and 2% sucrose.
Conjugation:	Unconjugated
Storage:	Store at -20°C as received.
Stability:	Stable for 12 months from date of receipt.
Predicted Protein Size:	26 kDa
Gene Name:	testis expressed 35
Database Link:	NP_115502 Entrez Gene 84066 Human Q5T0J7
Background:	The function of this protein remains unknown.
Synonyms:	C1orf49; TSC24
Note:	Immunogen sequence homology: Human: 100%



[View online »](#)

Product images:



WB Suggested Anti-C1orf49 Antibody; Titration:
1.0 ug/ml; Positive Control: Jurkat Whole Cell