

Product datasheet for **TA331696**

C4orf17 Rabbit Polyclonal Antibody

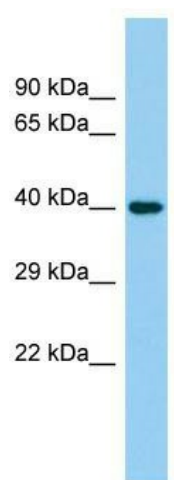
Product data:

Product Type:	Primary Antibodies
Applications:	WB
Recommended Dilution:	WB
Reactivity:	Human
Host:	Rabbit
Isotype:	IgG
Clonality:	Polyclonal
Immunogen:	The immunogen for Anti-C4orf17 Antibody is: synthetic peptide directed towards the C-terminal region of Human C4orf17. Synthetic peptide located within the following region: VKSPPTVKLPPNFTAKSKVLTRDTEGDQPTRVSSQGSEENKEVPKEAEHK
Formulation:	Liquid. Purified antibody supplied in 1x PBS buffer with 0.09% (w/v) sodium azide and 2% sucrose.
Conjugation:	Unconjugated
Storage:	Store at -20°C as received.
Stability:	Stable for 12 months from date of receipt.
Predicted Protein Size:	39 kDa
Gene Name:	chromosome 4 open reading frame 17
Database Link:	NP_115525 Entrez Gene 84103 Human Q53FE4
Background:	The function of this protein remains unknown.
Synonyms:	DKFZp434G072
Note:	Immunogen sequence homology: Human: 100%; Dog: 93%; Horse: 93%; Bovine: 92%; Pig: 79%; Guinea pig: 79%



[View online »](#)

Product images:



Host: Rabbit; Target Name: C4orf17; Sample
Tissue: Placenta lysates; Antibody Dilution:
1.0ug/ml