

## Product datasheet for **TA331695**

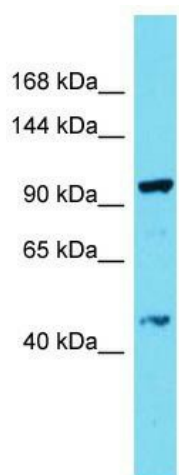
### DRC7 Rabbit Polyclonal Antibody

#### Product data:

Product Type:	Primary Antibodies
Applications:	WB
Recommended Dilution:	WB
Reactivity:	Human
Host:	Rabbit
Isotype:	IgG
Clonality:	Polyclonal
Immunogen:	The immunogen for Anti-CCDC135 Antibody is: synthetic peptide directed towards the C-terminal region of Human CCDC135. Synthetic peptide located within the following region: ELEVLEILKLREEEAAHTLTISIYDTRNEKSKEYREAMERMMHEEHLR
Formulation:	Liquid. Purified antibody supplied in 1x PBS buffer with 0.09% (w/v) sodium azide and 2% sucrose.
Conjugation:	Unconjugated
Storage:	Store at -20°C as received.
Stability:	Stable for 12 months from date of receipt.
Predicted Protein Size:	96 kDa
Gene Name:	dynein regulatory complex subunit 7
Database Link:	<a href="#">NP_115645</a> <a href="#">Entrez Gene 84229 Human</a> <a href="#">Q8IY82</a>
Background:	CCDC135 plays a role in the regulation of germ cells differentiation during spermatogenesis, particularly during meiosis and spermiogenesis. It may be involved in sperm motility.
Synonyms:	C16orf50; CCDC135; CFAP50; FAP50
Note:	Immunogen sequence homology: Dog: 100%; Pig: 100%; Rat: 100%; Horse: 100%; Human: 100%; Mouse: 100%; Rabbit: 100%; Guinea pig: 100%; Bovine: 93%



[View online »](#)

**Product images:**

Host: Rabbit; Target Name: CCDC135; Sample  
Tissue: THP-1 Whole Cell lysates; Antibody  
Dilution: 1.0ug/ml