

Product datasheet for **TA331693**

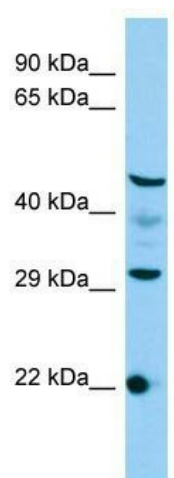
C3orf26 (CMSS1) Rabbit Polyclonal Antibody

Product data:

Product Type:	Primary Antibodies
Applications:	WB
Recommended Dilution:	WB
Reactivity:	Human
Host:	Rabbit
Isotype:	IgG
Clonality:	Polyclonal
Immunogen:	The immunogen for Anti-C3orf26 Antibody is: synthetic peptide directed towards the N-terminal region of Human C3orf26. Synthetic peptide located within the following region: KTKQPKECFLIQPKERKENTTKTRKRRKKKITDVLAKSEPKGLPEDLQK
Formulation:	Liquid. Purified antibody supplied in 1x PBS buffer with 0.09% (w/v) sodium azide and 2% sucrose. <i>Note that this product is shipped as lyophilized powder to China customers.</i>
Conjugation:	Unconjugated
Storage:	Store at -20°C as received.
Stability:	Stable for 12 months from date of receipt.
Predicted Protein Size:	31 kDa
Gene Name:	cms1 ribosomal small subunit homolog (yeast)
Database Link:	NP_115735 Entrez Gene 84319 Human Q9BQ75
Background:	The function of this protein remains unknown.
Synonyms:	C3orf26
Note:	Immunogen sequence homology: Human: 100%



[View online »](#)

Product images:

Host: Rabbit; Target Name: C3orf26; Sample
Tissue: HepG2 Whole Cell lysates; Antibody
Dilution: 1.0ug/ml