

Product datasheet for **TA331692**

RHOXF2 Rabbit Polyclonal Antibody

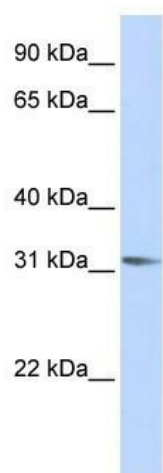
Product data:

Product Type:	Primary Antibodies
Applications:	IHC, WB
Recommended Dilution:	WB, IHC
Reactivity:	Human
Host:	Rabbit
Isotype:	IgG
Clonality:	Polyclonal
Immunogen:	The immunogen for Anti-RHOXF2 Antibody: synthetic peptide directed towards the middle region of human RHOXF2. Synthetic peptide located within the following region: DQSEKEPGQQYSRPQGAVGGLEPGNAQQPNVHAFTPLQLQELERIFQREQ
Formulation:	Liquid. Purified antibody supplied in 1x PBS buffer with 0.09% (w/v) sodium azide and 2% sucrose. <i>Note that this product is shipped as lyophilized powder to China customers.</i>
Conjugation:	Unconjugated
Storage:	Store at -20°C as received.
Stability:	Stable for 12 months from date of receipt.
Predicted Protein Size:	32 kDa
Gene Name:	Rhox homeobox family member 2
Database Link:	NP_115887 Entrez Gene 84528 Human Q9BQY4
Background:	RHOXF2 belongs to the paired-like homeobox family, PEPP subfamily. It contains 1 homeobox DNA-binding domain. The function of RHOXF2 remains unknown.
Synonyms:	CT107; PEPP-2; PEPP2; THG1
Note:	Immunogen sequence homology: Human: 100%; Pig: 86%
Protein Families:	Transcription Factors

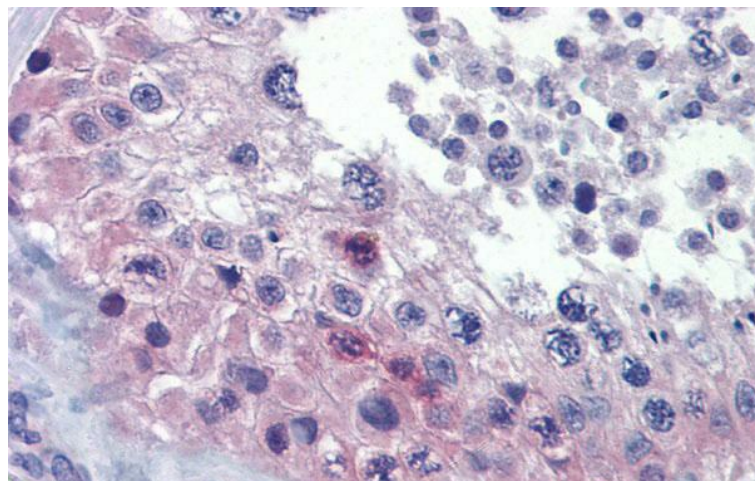


[View online »](#)

Product images:



WB Suggested Anti-RHOXF2 Antibody Titration:
0.2-1 ug/ml; ELISA Titer: 1: 1562500; Positive
Control: Hela cell lysate



Human Testis