

Product datasheet for **TA331690**

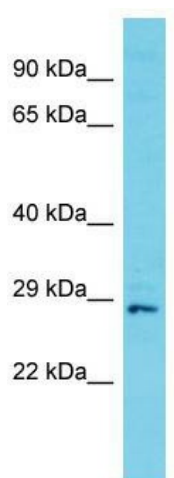
CFAP300 Rabbit Polyclonal Antibody

Product data:

Product Type:	Primary Antibodies
Applications:	WB
Recommended Dilution:	WB
Reactivity:	Human
Host:	Rabbit
Isotype:	IgG
Clonality:	Polyclonal
Immunogen:	The immunogen for Anti-C11orf70 Antibody is: synthetic peptide directed towards the C-terminal region of Human C11orf70. Synthetic peptide located within the following region: ELRRVLLVEDSEKYEIFSQPDREEFLFCLFKHLCLGGALCQYEDVISPYL
Formulation:	Liquid. Purified antibody supplied in 1x PBS buffer with 0.09% (w/v) sodium azide and 2% sucrose.
Conjugation:	Unconjugated
Storage:	Store at -20°C as received.
Stability:	Stable for 12 months from date of receipt.
Predicted Protein Size:	25 kDa
Gene Name:	chromosome 11 open reading frame 70
Database Link:	NP_116319 Entrez Gene 85016 Human Q9BRQ4
Background:	The function of this protein remains unknown.
Synonyms:	MGC13040
Note:	Immunogen sequence homology: Human: 100%; Dog: 93%; Pig: 93%; Rabbit: 92%; Rat: 90%; Mouse: 90%; Horse: 86%; Bovine: 86%; Guinea pig: 86%



[View online »](#)

Product images:

Host: Rabbit; Target Name: C11orf70; Sample
Tissue: Jurkat Whole Cell lysates; Antibody
Dilution: 1.0ug/ml