

## Product datasheet for **TA331689**

### CFAP300 Rabbit Polyclonal Antibody

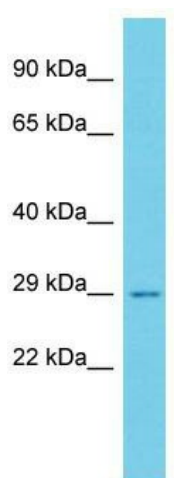
#### Product data:

Product Type:	Primary Antibodies
Applications:	WB
Recommended Dilution:	WB
Reactivity:	Human
Host:	Rabbit
Isotype:	IgG
Clonality:	Polyclonal
Immunogen:	The immunogen for Anti-C11orf70 Antibody is: synthetic peptide directed towards the C-terminal region of Human C11orf70. Synthetic peptide located within the following region: LIYKDLVSVRKNPQTKKIQTSSVFKVSAYDSAGMCYPSAKNHEQTFSYF
Formulation:	Liquid. Purified antibody supplied in 1x PBS buffer with 0.09% (w/v) sodium azide and 2% sucrose.
Purification:	Affinity Purified
Conjugation:	Unconjugated
Storage:	Store at -20°C as received.
Stability:	Stable for 12 months from date of receipt.
Predicted Protein Size:	29 kDa
Gene Name:	chromosome 11 open reading frame 70
Database Link:	<a href="#">NP_116319</a> <a href="#">Entrez Gene 85016 Human</a> <a href="#">Q9BRQ4</a>
Background:	The function of this protein remains unknown.
Synonyms:	MGC13040
Note:	Immunogen sequence homology: Dog: 100%; Pig: 100%; Human: 100%; Bovine: 100%; Rabbit: 100%; Rat: 93%; Horse: 93%; Guinea pig: 93%; Mouse: 79%



[View online »](#)

## Product images:



Host: Rabbit; Target Name: C11orf70; Sample  
Tissue: HeLa Whole cell lysates; Antibody Dilution:  
1.0ug/ml