

Product datasheet for **TA331687**

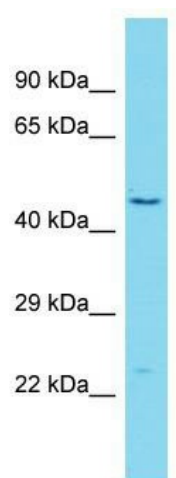
HDHD5 Rabbit Polyclonal Antibody

Product data:

Product Type:	Primary Antibodies
Applications:	WB
Recommended Dilution:	WB
Reactivity:	Human
Host:	Rabbit
Isotype:	IgG
Clonality:	Polyclonal
Immunogen:	The immunogen for Anti-CECR5 Antibody is: synthetic peptide directed towards the C-terminal region of Human CECR5. Synthetic peptide located within the following region: SQSCISILVCTGVYNPRNPQSTEPVLGGGEPFFHGHRDLCFSPGLMEASH
Formulation:	Liquid. Purified antibody supplied in 1x PBS buffer with 0.09% (w/v) sodium azide and 2% sucrose. <i>Note that this product is shipped as lyophilized powder to China customers.</i>
Conjugation:	Unconjugated
Storage:	Store at -20°C as received.
Stability:	Stable for 12 months from date of receipt.
Predicted Protein Size:	47 kDa
Gene Name:	cat eye syndrome chromosome region, candidate 5
Database Link:	NP_149061 Entrez Gene 27440 Human Q9BXW7
Background:	The function of this protein remains unknown.
Synonyms:	candidate 5; cat eye syndrome chromosome region
Note:	Immunogen sequence homology: Human: 100%



[View online »](#)

Product images:

Host: Rabbit; Target Name: CECR5; Sample
Tissue: HT1080 Whole Cell lysates; Antibody
Dilution: 1.0ug/ml