

## Product datasheet for **TA331686**

### **A2LD1 (GGACT) Rabbit Polyclonal Antibody**

#### **Product data:**

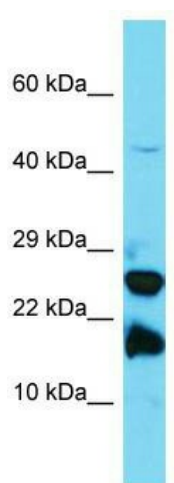
Product Type:	Primary Antibodies
Applications:	WB
Recommended Dilution:	WB
Reactivity:	Human
Host:	Rabbit
Isotype:	IgG
Clonality:	Polyclonal
Immunogen:	The immunogen for Anti-A2LD1 Antibody is: synthetic peptide directed towards the N-terminal region of Human A2LD1. Synthetic peptide located within the following region: GTLKRGQPNHRVLRDGAHGSAAFRARGRTLEPYPLVIAGEHNIPWLLHLP
Formulation:	Liquid. Purified antibody supplied in 1x PBS buffer with 0.09% (w/v) sodium azide and 2% sucrose. <i>Note that this product is shipped as lyophilized powder to China customers.</i>
Conjugation:	Unconjugated
Storage:	Store at -20°C as received.
Stability:	Stable for 12 months from date of receipt.
Predicted Protein Size:	16 kDa
Gene Name:	gamma-glutamylamine cyclotransferase
Database Link:	<a href="#">NP_149101</a> <a href="#">Entrez Gene 87769 Human</a> <a href="#">Q9BVM4</a>
Background:	The protein encoded by this gene aids in the proteolytic degradation of crosslinked fibrin by breaking down isodipeptide L-gamma-glutamyl-L-epsilon-lysine, a byproduct of fibrin degradation. The reaction catalyzed by the encoded gamma-glutamylaminecyclotransferase produces 5-oxo-L-proline and a free alkylamine. Two transcript variants encoding the same protein have been found for this gene.
Synonyms:	A2LD1



[View online »](#)

**Note:** Immunogen sequence homology: Human: 100%; Horse: 90%; Pig: 86%; Bovine: 86%; Dog: 85%; Rabbit: 79%

**Product images:**



Host: Rabbit; Target Name: A2LD1; Sample Tissue: Jurkat Whole Cell lysates; Antibody Dilution: 1.0ug/ml