

## Product datasheet for **TA331685**

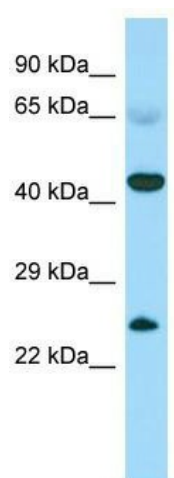
### CABS1 Rabbit Polyclonal Antibody

#### Product data:

Product Type:	Primary Antibodies
Applications:	WB
Recommended Dilution:	WB
Reactivity:	Human
Host:	Rabbit
Isotype:	IgG
Clonality:	Polyclonal
Immunogen:	The immunogen for Anti-CABS1 Antibody is: synthetic peptide directed towards the N-terminal region of Human CABS1. Synthetic peptide located within the following region: TTITSEGDHVTSTVNEYMLESDFSTTTDNKLTAKKEKLSKSEDDMGTDFFIKS
Formulation:	Liquid. Purified antibody supplied in 1x PBS buffer with 0.09% (w/v) sodium azide and 2% sucrose. <i>Note that this product is shipped as lyophilized powder to China customers.</i>
Conjugation:	Unconjugated
Storage:	Store at -20°C as received.
Stability:	Stable for 12 months from date of receipt.
Predicted Protein Size:	43 kDa
Gene Name:	calcium binding protein, spermatid associated 1
Database Link:	<a href="#">NP_149113</a> <a href="#">Entrez Gene 85438 Human</a> <a href="#">Q96KC9</a>
Background:	The function of this protein remains unknown.
Synonyms:	C4orf35; CLPH; NYD-SP26
Note:	Immunogen sequence homology: Human: 100%



[View online »](#)

**Product images:**

Host: Rabbit; Target Name: CABS1; Sample  
Tissue: Fetal Heart lysates; Antibody Dilution:  
1.0ug/ml