

## Product datasheet for TA331683

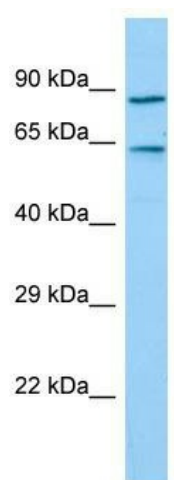
### TIGD7 Rabbit Polyclonal Antibody

#### Product data:

Product Type:	Primary Antibodies
Applications:	WB
Recommended Dilution:	WB
Reactivity:	Human
Host:	Rabbit
Isotype:	IgG
Clonality:	Polyclonal
Immunogen:	The immunogen for Anti-TIGD7 Antibody is: synthetic peptide directed towards the C-terminal region of Human TIGD7. Synthetic peptide located within the following region: LETKLDDDRVWLNKGDEEKGCCLKTKGGITKEVVQKGGEAEKQTAEFKLSA
Formulation:	Liquid. Purified antibody supplied in 1x PBS buffer with 0.09% (w/v) sodium azide and 2% sucrose.
Conjugation:	Unconjugated
Storage:	Store at -20°C as received.
Stability:	Stable for 12 months from date of receipt.
Predicted Protein Size:	60 kDa
Gene Name:	tigger transposable element derived 7
Database Link:	<a href="#">NP_149985</a> <a href="#">Entrez Gene 91151 Human</a> <a href="#">Q6NT04</a>
Background:	The protein encoded by this gene belongs to the tigger subfamily of the pogo superfamily of DNA-mediated transposons in humans. These proteins are related to DNA transposons found in fungi and nematodes, and more distantly to the Tc1 and mariner transposases. They are also very similar to the major mammalian centromere protein B. The exact function of this gene is not known.
Synonyms:	Sancho
Note:	Immunogen sequence homology: Human: 100%
Protein Families:	Transcription Factors


[View online »](#)

## Product images:



Host: Rabbit; Target Name: TIGD7; Sample  
Tissue: HeLa Whole Cell lysates; Antibody Dilution:  
1.0ug/ml