

Product datasheet for **TA331682**

ABCC12 Rabbit Polyclonal Antibody

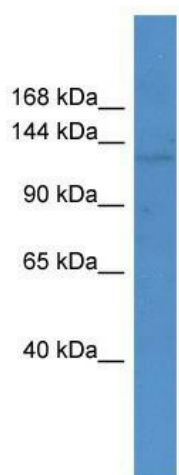
Product data:

Product Type:	Primary Antibodies
Applications:	WB
Recommended Dilution:	WB
Reactivity:	Mouse
Host:	Rabbit
Isotype:	IgG
Clonality:	Polyclonal
Immunogen:	The immunogen for Anti-Abcc12 Antibody: synthetic peptide corresponding to a region of Mouse. Synthetic peptide located within the following region: NILFGEKYNHQRYQHTVHVCGLQKDLNSLPYGDLTEIGERGVNLSGGQRQ
Formulation:	Liquid. Purified antibody supplied in 1x PBS buffer with 0.09% (w/v) sodium azide and 2% sucrose. <i>Note that this product is shipped as lyophilized powder to China customers.</i>
Conjugation:	Unconjugated
Storage:	Store at -20°C as received.
Stability:	Stable for 12 months from date of receipt.
Predicted Protein Size:	153 kDa
Gene Name:	ATP binding cassette subfamily C member 12
Database Link:	NP_150229 Entrez Gene 244562 Mouse Q96J65
Background:	Abcc12 is a probable transporter.
Synonyms:	MRP9
Note:	Immunogen sequence homology: Dog: 100%; Horse: 100%; Human: 100%; Bovine: 100%; Pig: 93%; Rat: 93%; Mouse: 93%; Rabbit: 93%; Guinea pig: 93%
Protein Families:	Druggable Genome, Transmembrane
Protein Pathways:	ABC transporters



[View online »](#)

Product images:



WB Suggested Anti-Abcc12 Antibody Titration:
0.2-1 ug/ml; ELISA Titer: 1: 312500; Positive
Control: Mouse Spleen