

## Product datasheet for **TA331680**

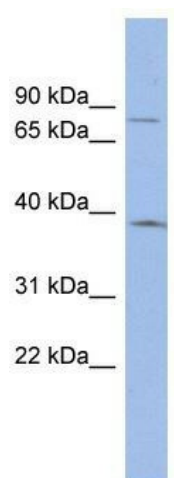
### ZNF300 Rabbit Polyclonal Antibody

#### Product data:

Product Type:	Primary Antibodies
Applications:	WB
Recommended Dilution:	WB
Reactivity:	Human
Host:	Rabbit
Isotype:	IgG
Clonality:	Polyclonal
Immunogen:	The immunogen for Anti-ZNF300 Antibody: synthetic peptide directed towards the N terminal of human ZNF300. Synthetic peptide located within the following region: FHHKILKGVTRDGSILKVCQGDGQLQRFLNQDKLFRQVTFVNSKTV
Formulation:	Liquid. Purified antibody supplied in 1x PBS buffer with 0.09% (w/v) sodium azide and 2% sucrose. <i>Note that this product is shipped as lyophilized powder to China customers.</i>
Conjugation:	Unconjugated
Storage:	Store at -20°C as received.
Stability:	Stable for 12 months from date of receipt.
Predicted Protein Size:	69 kDa
Gene Name:	zinc finger protein 300
Database Link:	<a href="#">NP_443092</a> <a href="#">Entrez Gene 91975 Human</a> <a href="#">Q96RE9</a>
Background:	ZNF300 has a transcriptional repressor activity.
Synonyms:	DKFZp686B24204
Note:	Immunogen sequence homology: Human: 100%; Horse: 87%; Dog: 80%; Yeast: 75%
Protein Families:	Transcription Factors



[View online »](#)

**Product images:**

WB Suggested Anti-ZNF300 Antibody Titration:  
0.2-1 ug/ml; ELISA Titer: 1: 12500; Positive  
Control: THP-1 cell lysate