

## Product datasheet for **TA331679**

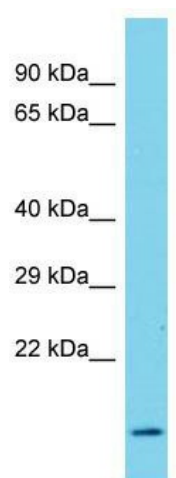
### SNX18 Rabbit Polyclonal Antibody

#### Product data:

Product Type:	Primary Antibodies
Applications:	WB
Recommended Dilution:	WB
Reactivity:	Human
Host:	Rabbit
Isotype:	IgG
Clonality:	Polyclonal
Immunogen:	The immunogen for Anti-SNX22 Antibody is: synthetic peptide directed towards the N-terminal region of Human SNX22. Synthetic peptide located within the following region: LEVHIPSVGPEAEGPRQSPEKSHMVFRVEVLCSGRRHTVPRRYSEFHALH
Formulation:	Liquid. Purified antibody supplied in 1x PBS buffer with 0.09% (w/v) sodium azide and 2% sucrose. <i>Note that this product is shipped as lyophilized powder to China customers.</i>
Purification:	Affinity Purified
Conjugation:	Unconjugated
Storage:	Store at -20°C as received.
Stability:	Stable for 12 months from date of receipt.
Predicted Protein Size:	13 kDa
Gene Name:	sorting nexin 18
Database Link:	<a href="#">NP_443102</a> <a href="#">Entrez Gene 112574 Human</a> <a href="#">Q96RF0</a>
Background:	The function of this protein remains unknown.
Synonyms:	SH3PX2; SH3PXD3B; SNAG1
Note:	Immunogen sequence homology: Rat: 100%; Horse: 100%; Human: 100%; Mouse: 100%; Dog: 85%; Pig: 85%; Guinea pig: 85%



[View online »](#)

**Product images:**

Host: Rabbit; Target Name: SNX22; Sample  
Tissue: HeLa Whole Cell lysates; Antibody Dilution:  
1.0ug/ml