

Product datasheet for **TA331678**

PLEKHG4B Rabbit Polyclonal Antibody

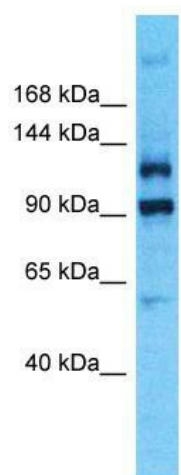
Product data:

Product Type:	Primary Antibodies
Applications:	WB
Recommended Dilution:	WB
Reactivity:	Human
Host:	Rabbit
Isotype:	IgG
Clonality:	Polyclonal
Immunogen:	The immunogen for Anti-PLEKHG4B Antibody is: synthetic peptide directed towards the C-terminal region of Human PLEKHG4B. Synthetic peptide located within the following region: HVFLFEDLILFSKTQKVEGSHDVYLYKQSFKTAEIGMTENVGDSGLRFEI
Formulation:	Liquid. Purified antibody supplied in 1x PBS buffer with 0.09% (w/v) sodium azide and 2% sucrose. <i>Note that this product is shipped as lyophilized powder to China customers.</i>
Conjugation:	Unconjugated
Storage:	Store at -20°C as received.
Stability:	Stable for 12 months from date of receipt.
Predicted Protein Size:	139 kDa
Gene Name:	pleckstrin homology and RhoGEF domain containing G4B
Database Link:	NP_443141 Entrez Gene 153478 Human Q96PX9
Background:	The function of this protein remains unknown.
Synonyms:	FLJ43173; KIAA1909
Note:	Immunogen sequence homology: Human: 100%; Horse: 79%



[View online »](#)

Product images:



Host: Rabbit; Target Name: PLEKHG4B; Sample
Tissue: HeLa Whole Cell lysates; Antibody Dilution:
1.0ug/ml