

Product datasheet for **TA331676**

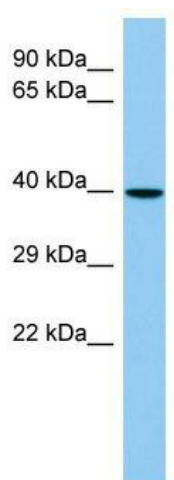
MAS1L Rabbit Polyclonal Antibody

Product data:

Product Type:	Primary Antibodies
Applications:	WB
Recommended Dilution:	WB
Reactivity:	Human
Host:	Rabbit
Isotype:	IgG
Clonality:	Polyclonal
Immunogen:	The immunogen for Anti-MAS1L Antibody is: synthetic peptide directed towards the N-terminal region of Human MAS1L. Synthetic peptide located within the following region: WFSQRAGWTVFAESQISLSCSLCHSGDQEAQNPNLVSQLCGVFLQNETN
Formulation:	Liquid. Purified antibody supplied in 1x PBS buffer with 0.09% (w/v) sodium azide and 2% sucrose.
Conjugation:	Unconjugated
Storage:	Store at -20°C as received.
Stability:	Stable for 12 months from date of receipt.
Predicted Protein Size:	42 kDa
Gene Name:	MAS1 proto-oncogene like, G protein-coupled receptor
Database Link:	NP_443199 Entrez Gene 116511 Human P35410
Background:	The function of this protein remains unknown.
Synonyms:	dj994E9.2; MAS-L; MRG
Note:	Immunogen sequence homology: Human: 100%
Protein Families:	Druggable Genome, Transmembrane



[View online »](#)

Product images:

Host: Rabbit; Target Name: MAS1L; Sample
Tissue: Placenta lysates; Antibody Dilution:
1.0ug/ml