

## Product datasheet for **TA331674**

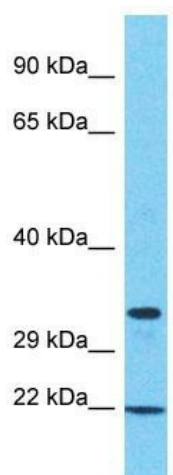
### SAMD10 Rabbit Polyclonal Antibody

#### Product data:

Product Type:	Primary Antibodies
Applications:	WB
Recommended Dilution:	WB
Reactivity:	Human
Host:	Rabbit
Isotype:	IgG
Clonality:	Polyclonal
Immunogen:	The immunogen for Anti-SAMD10 Antibody is: synthetic peptide directed towards the N-terminal region of Human SAMD10. Synthetic peptide located within the following region: AHFSFCRTLLEHTVSAESIPCHLPRTPGTSLTWHDSRSQRAASSRPIKLL
Formulation:	Liquid. Purified antibody supplied in 1x PBS buffer with 0.09% (w/v) sodium azide and 2% sucrose. <i>Note that this product is shipped as lyophilized powder to China customers.</i>
Conjugation:	Unconjugated
Storage:	Store at -20°C as received.
Stability:	Stable for 12 months from date of receipt.
Predicted Protein Size:	22 kDa
Gene Name:	sterile alpha motif domain containing 10
Database Link:	<a href="#">NP_542188</a> <a href="#">Entrez Gene 140700 Human</a> <a href="#">Q9BYL1</a>
Background:	The function of this protein remains unknown.
Synonyms:	C20orf136; dj591C20; dj591C20.7
Note:	Immunogen sequence homology: Human: 100%; Pig: 93%; Rat: 93%; Mouse: 93%; Guinea pig: 93%; Dog: 86%; Bovine: 86%



[View online »](#)

**Product images:**

Host: Rabbit  
Target Name: SAMD10  
Sample Tissue: 786-0 Cell Lysate  
Antibody Dilution: 1.0µg/ml

Host: Rabbit; Target Name: SAMD10; Sample  
Tissue: 786-0 Whole Cell lysates; Antibody  
Dilution: 1.0ug/ml