

Product datasheet for **TA331672**

SPSB3 Rabbit Polyclonal Antibody

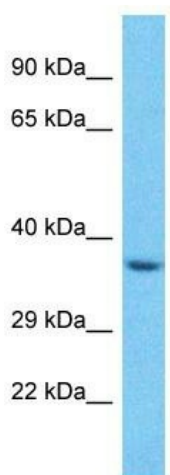
Product data:

Product Type:	Primary Antibodies
Applications:	WB
Recommended Dilution:	WB
Reactivity:	Human
Host:	Rabbit
Isotype:	IgG
Clonality:	Polyclonal
Immunogen:	The immunogen for Anti-SPSB3 Antibody is: synthetic peptide directed towards the C-terminal region of Human SPSB3. Synthetic peptide located within the following region: PGLKQVLHNKLGWVLSMSCSRRKAPVSDPQAATSAHPSSREPRPCQRKRC
Formulation:	Liquid. Purified antibody supplied in 1x PBS buffer with 0.09% (w/v) sodium azide and 2% sucrose. <i>Note that this product is shipped as lyophilized powder to China customers.</i>
Conjugation:	Unconjugated
Storage:	Store at -20°C as received.
Stability:	Stable for 12 months from date of receipt.
Predicted Protein Size:	39 kDa
Gene Name:	splA/ryanodine receptor domain and SOCS box containing 3
Database Link:	NP_543137 Entrez Gene 90864 Human Q6PJ21
Background:	SPSB3 may be a substrate recognition component of a SCF-like ECS (Elongin BC-CUL2/5-SOCS-box protein) E3 ubiquitin-protein ligase complex which mediates the ubiquitination and subsequent proteasomal degradation of target proteins.
Synonyms:	C16orf31; SSB3
Note:	Immunogen sequence homology: Human: 100%
Protein Families:	Druggable Genome



[View online »](#)

Product images:



Host: Rabbit
Target Name: SPSB3
Sample Tissue: HepG2 Cell Lysate
Antibody Dilution: 1.0 μ g/ml

Host: Rabbit; Target Name: SPSB3; Sample Tissue: HepG2 Whole Cell lysates; Antibody Dilution: 1.0ug/ml