

Product datasheet for **TA331671**

ASB14 Rabbit Polyclonal Antibody

Product data:

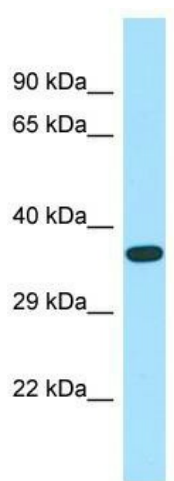
Product Type:	Primary Antibodies
Applications:	WB
Recommended Dilution:	WB
Reactivity:	Human
Host:	Rabbit
Isotype:	IgG
Clonality:	Polyclonal
Immunogen:	The immunogen for Anti-ASB14 Antibody is: synthetic peptide directed towards the N-terminal region of Human ASB14. Synthetic peptide located within the following region: LELLIQAGFDVNFMLDQRINKHYDDHRKSALYFAVSNSDLSSVKLLLSAG
Formulation:	Liquid. Purified antibody supplied in 1x PBS buffer with 0.09% (w/v) sodium azide and 2% sucrose.
Conjugation:	Unconjugated
Storage:	Store at -20°C as received.
Stability:	Stable for 12 months from date of receipt.
Predicted Protein Size:	33 kDa
Gene Name:	ankyrin repeat and SOCS box containing 14
Database Link:	NP_569058 Entrez Gene 142686 Human A6NK59
Background:	The protein encoded by this gene is a member of the ankyrin repeat and SOCS box-containing (ASB) family of proteins. They contain ankyrin repeat sequence and a SOCS box domain. The SOCS box serves to couple suppressor of cytokine signalling (SOCS) proteins and their binding partners with the elongin B and C complex, possibly targeting them for degradation. Alternative splicing results in multiple transcript variants encoding different isoforms.
Synonyms:	DKFZp313L0121
Note:	Immunogen sequence homology: Human: 100%; Dog: 93%; Bovine: 93%; Pig: 86%; Rat: 86%; Mouse: 86%; Rabbit: 86%; Guinea pig: 86%; Horse: 79%



[View online »](#)

Protein Families: Druggable Genome

Product images:



WB Suggested Anti-ASB14 Antibody; Titration: 1.0 ug/ml; Positive Control: Fetal Heart