

## Product datasheet for **TA331670**

### AMZ1 Rabbit Polyclonal Antibody

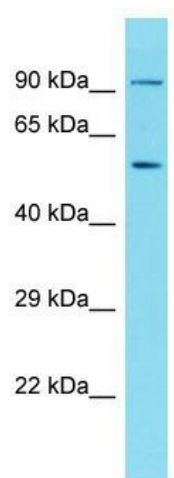
#### Product data:

Product Type:	Primary Antibodies
Applications:	WB
Recommended Dilution:	WB
Reactivity:	Human
Host:	Rabbit
Isotype:	IgG
Clonality:	Polyclonal
Immunogen:	The immunogen for Anti-AMZ1 Antibody is: synthetic peptide directed towards the N-terminal region of Human AMZ1. Synthetic peptide located within the following region: LPSVAAASIRCSSRPSRSDRLQLHTDGILSFLKNNKPGDALCVLGLTLS
Formulation:	Liquid. Purified antibody supplied in 1x PBS buffer with 0.09% (w/v) sodium azide and 2% sucrose. <i>Note that this product is shipped as lyophilized powder to China customers.</i>
Conjugation:	Unconjugated
Storage:	Store at -20°C as received.
Stability:	Stable for 12 months from date of receipt.
Predicted Protein Size:	55 kDa
Gene Name:	archaelysin family metallopeptidase 1
Database Link:	<a href="#">NP_597720</a> <a href="#">Entrez Gene 155185 Human Q400G9</a>
Background:	AMZ1 is a Zinc metalloprotease. It exhibits aminopeptidase activity against neurogranin in vitro and does not hydrolyze angiotensin-2.
Synonyms:	KIAA1950
Note:	Immunogen sequence homology: Human: 100%; Dog: 93%; Pig: 86%; Rat: 86%; Horse: 86%; Mouse: 79%; Bovine: 79%; Rabbit: 79%; Guinea pig: 79%



[View online »](#)

## Product images:



Host: Rabbit; Target Name: AMZ1; Sample Tissue: Jurkat Whole Cell lysates; Antibody Dilution: 1.0ug/ml