

## Product datasheet for **TA331669**

### Psmg2 Rabbit Polyclonal Antibody

#### Product data:

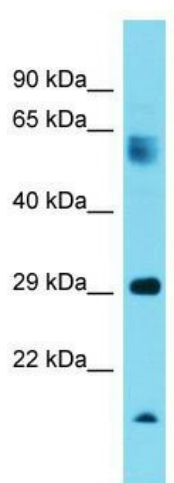
Product Type:	Primary Antibodies
Applications:	WB
Recommended Dilution:	WB
Reactivity:	Mouse
Host:	Rabbit
Isotype:	IgG
Clonality:	Polyclonal
Immunogen:	The immunogen for Anti-Psmg2 Antibody is: synthetic peptide directed towards the middle region of Mouse Psmg2. Synthetic peptide located within the following region: YLLTPCLQKSVQNKIKSLNWLEMEKSRCEPMSDSEFCIRIPGGGITKTL
Formulation:	Liquid. Purified antibody supplied in 1x PBS buffer with 0.09% (w/v) sodium azide and 2% sucrose. <i>Note that this product is shipped as lyophilized powder to China customers.</i>
Conjugation:	Unconjugated
Storage:	Store at -20°C as received.
Stability:	Stable for 12 months from date of receipt.
Predicted Protein Size:	29 kDa
Gene Name:	proteasome (prosome, macropain) assembly chaperone 2
Database Link:	<a href="#">NP_598899</a> <a href="#">Entrez Gene 107047 Mouse</a> <a href="#">Q9EST4</a>
Background:	Psmg2 is a chaperone protein which promotes assembly of the 20S proteasome as part of a heterodimer with PSMG1. The PSMG1-PSMG2 heterodimer binds to the PSMA5 and PSMA7 proteasome subunits, promotes assembly of the proteasome alpha subunits into the heteroheptameric alpha ring and prevents alpha ring dimerization.
Synonyms:	CLAST3; HCCA3; HDCMC29P; HSPC260; HsT1707; MDS003; MGC15092; PAC-2; PAC2; TNFSF5IP1



[View online »](#)

**Note:** Immunogen sequence homology: Human: 100%; Bovine: 93%; Rabbit: 93%; Pig: 92%; Rat: 92%; Mouse: 92%; Sheep: 92%; Guinea pig: 92%; Goat: 86%; Dog: 83%

**Product images:**



Host: Rabbit; Target Name: Psmg2; Sample Tissue: Mouse Liver lysates; Antibody Dilution: 1.0ug/ml